



## Smart Battery powered crimping tool universal „US-6M“

Sensor

Hydraulics for interchangeable pressing tools, crimping head can be rotated by 180°, with fast opening, manual return flow after perfect pressure.

- for 4 different interchangeable heads (item no. 216761, item no. 216762, item no. 216763, item no. 216764)
- Heads can be changed easily
- Can be locked using 2 extractable pins
- With the new HAUPA battery item no. 215523 and charger item no. 215527
- Pressing load kN: 60
- Working pressure in bar: 700

With the different colours of the sensor LED, it shows whether the pressing has been completed successfully or which errors have occurred:

- Light is green: Pressing completed as standard, motor stopped.
- Light is orange: Battery voltage not sufficient
- Light is red: Pressing interrupted before completed

The device also has 1 white LED designed to illuminate the working area.

Art. no. 216760-1

Main body

300-06

## Crimping headstock „U-K0-6“

Pressing head for interchangeable pressing applications, with quick opening, without inserts.

- Head can be opened
- Opening / Hub: 17 mm
- Pressing width: slim
- Cable lugs: standard Cu 6-300 / DIN Cu 6-300 / DIN Al 16-240
- Connectors: standard Cu 6-300 / DIN Cu 6-300 / DIN Al 16-240

360° | 216761



1

## Crimping headstock „U-KDE240-6“

Pressing head with quick opening, indent v-shape pressing, no inserts required.

- Head can be opened
- Cable lugs: standard Cu 16-240
- Connectors: standard Cu 16-240

360° | 216763



2

Video 216760-1



4x





## Cutting headstock „U-KS-6-S50“

for copper and aluminium cable



Art. no. 216762  
for 216760-1



3

## Punching headstock „U-S-6“

without inserts

### Advantages:

- Head can be rotated by 360°
- Flexible aluminium head

### Punching capacity:

Shaped holes 138 x 138 mm (ST37 2.5 mm)  
Round holes 150 mm (ST37 3 mm) / 63 mm (VA 2 mm)



4

## Adapter

For hydraulic pump item 216357 so the interchangeable heads for the Smart Universal can be used (items 216761, 216762, 216763, 216764)

- with quick-lock hydraulic connection (Cejin Series 115)



5

## Li-Ion battery 18 V, 2 Ah

Compatible with all Li-Ion 18 V battery devices

- Intelligent battery monitoring, temperature protection, LED capacity indicator
- Charging possible using the HAUPA compact charger item 215527 or original Makita charging technology
- Please note: This battery cannot be charged using the HAUPA quick charger item 215513.



Art. no. 215523  
18 V, 2 Ah



## Li-Ion battery 18 V, 4 Ah

Compatible with all Li-Ion 18 V battery devices

- intelligent battery monitoring, temperature protection, LED capacity indicator
- Charging possible using the HAUPA compact charger item 215527 or original Makita charging technology
- Please note: This battery cannot be charged using the HAUPA quick charger item 215513.



Art. no. 215525  
18 V, 4 Ah



## Li-Ion 18 V compact charger

For models 215503, 215511, 215523, 215525

- Compact design • Low weight
- With LED charging indicator light
- Input voltage 100 - 240V AC
- Charging voltage 21V DC, charging current 1.5A
- Also suitable for Makita batteries BL1830, BL1815, BL1840



Art. no. 215527



Autumn 2018

Changeable headstocks for battery powered crimping tools. Delivery from autumn 2018.



Art. no. 216357

**haupa**

... convincing solutions

## Torque wrench 1000 V

**TQ**

5 – 50 Nm, full insulated, from shock-resistant plastic, with built-in reversible ratchet, right-handed rotation with collet

- 5 – 50 Nm
- The achievement of the set torque is made noticeable by a clearly audible or tactile mechanism.



Art. no. 220415  
VDE 3/8"



## „HUPslim“ 1000 V screwdriver set



with 2 component handle made from PP/TPE material, blade made from molybdenum vanadium steel, hardened, blasted, routine checked, insulated, 6-piece.

Screwdriver with reduced blade diameter and integrated protective insulation. Deep screwing can be achieved to a better standard thanks to the reduced blade diameter.

**Contents:** 1 Slim flat head screwdriver in 3.5 x 100 mm, 4 x 100 mm, 5.5 x 125 mm and 6.5 x 150 mm, Slim Phillips or Pozidriv screwdrivers in sizes 1 and 2

Art. no. 102999  
Slim: Slot / Phillips

Art. no. 102999/PZ  
Slim: Slot / Pozidriv



## „HUPslim“ 1000 V screwdriver set PZ/FL1 + 2



with 2 component handle made from PP/TPE material, blade made from molybdenum vanadium steel, hardened, blasted, routine checked, insulated, 2-piece. Screwdriver with reduced blade diameter and integrated protective insulation. Deep screwing can be achieved to a better standard thanks to the reduced blade diameter.



Art. no. 102879  
Set Slim: 2 pieces



## „HUPslim“ 1000 V screwdriver



with 2 component handle made from PP/TPE material, blade made from molybdenum vanadium steel, hardened, blasted, routine checked, insulated

Screwdriver with reduced blade diameter and integrated protective insulation. Deep screwing can be achieved to a better standard thanks to the reduced blade diameter.

Art. no.	form	CW x BL	KSt	PU	
102914	Slot	3,5 x 100	0,6	1	
102916	Slot	4 x 100	0,8	1	
102917	Slot	4 x 100	1,0	1	
102918	Slot	5,5 x 125	1,0	1	
102920	Slot	6,5 x 150	1,2	1	
102942	Phillips	1		1	
102944	Phillips	2		1	
102952	Pozidriv	1		1	
102954	Pozidriv	2		1	

### with PZ slot profile head

Art. no.	form	CW x BL	size	PU	
102870	PZ/FL	5,0 x 80	1	1	
102872	PZ/FL	6,0 x 100	2	1	



## „SocketFlex“ socket wrench box

Chrome vanadium steel, industrial quality, black plastic case with metal catch.

### Contents:

- 12 1/4" socket wrench inserts 4 - 4,5 - 5 - 5,5 - 6 - 7 - 8 - 9 - 10 - 11 - 12 - 13 mm
- 2 1/4" 50 and 150 mm extensions
- 1 3/8" x 1/4" adapter for extending for use as a T-handle
- 1 1/4" universal joint
- 1 bit adapter 4-edge to 1/4" hexagonal
- 1 1/4" reversible wratchet
- 13 1/2" socket wrench inserts 10 - 11 - 12 - 13 - 14 - 15 - 17 - 19 - 22 - 24 - 27 - 30 - 32 mm
- 2 1/2" 75 and 250 mm extensions
- 1 3/8" x 1/2" adapter for extending for use as a T-handle
- 1 1/2" universal joint
- 1 1/2" reversible ratchet
- 1 Flex ratchet screwdriver
- 1 adapter 1/4" x 1/4" x 50 mm
- 1 adapter 1/4" x 1/4" x 80 mm
- 4 bits 1/4", 50 mm, PH 0 - 1 - 2 - 3
- 4 bits 1/4", 50 mm, PZ 0 - 1 - 2 - 3
- 2 bits 1/4", 50 mm, PZ/FL 1 - 2
- 4 bits 1/4", 50 mm, slot 3 - 4 - 5 - 6 mm
- 6 bits 1/4", 50 mm, hexagon socket 2 - 2,5 - 3 - 4 - 5 - 6

Art. no. 110672

Set: 59 pieces



May 2018

## „BitBox L“, 46 pieces

Robust black plastic box, premium quality secure and special S2 bit set! 1/4" = 25 mm bits

### Contents:

- 1 compact reversible ratchet 1/4"
- 11 socket wrench inserts 4 - 12 1/4"
- 1 short extension 1/4"
- 1 1/4" adapter for bits
- 1 1/4" extension for use as a T-handle
- 1 adapter with 1/4" bit collet for all driver type
- 5 bits PH 0, 1, 2, 2, 3
- 5 bits PZ 0, 1, 2, 2, 3
- 5 bits Slot 3, 3.5, 4.5, 5.5, 6.5
- 4 bits Internal hexagonal bolt 3, 4, 5, 6
- 11 bits Tx 6, 7, 8, 9, 10, 15, 20, 25, 27, 30, 40



Autumn 2018

## „BitBox S“, 50 mm, 7-piece

50 mm 1/4" bits in plastic box

### Contents:

- 1 bit PH 1, 2
- 1 bit PZ 1, 2
- 1 bit PZ/FL 1, 2
- 1 bit Slot 4



Autumn 2018

## „Flex“ hinged ratchet combination wrench set

Hinged ratchet combination wrench set made of chrome vanadium steel, chromium plated surface, polished, fine-toothed, 72 teeth, with hinge, 180° swivelling head, DIN 3113, ISO 3318, in a practical plastic box with metal catch.

### Contents:

- Wrench sizes
- 8 - 9 - 10 - 12 - 13 - 14 - 17 - 19 mm



Art. no. 110902

8 pcs., SW: 8-19 mm



May 2018

## 3/8" internal hexagonal bolt set

7-piece, in roll-up case with loop for hanging up, extra long 150 mm, with ball end for challenging installation positions

Sizes: 3 - 4 - 5 - 6 - 7 - 8 - 10



May 2018

**haupa**

... convincing solutions



## LED working light „HUPlight10+3“

- Integrated Li-Ion 3.7V / 6.7Ah battery
- **10 watt + 3 watt LED**
- High-quality plastic housing
- For use inside and out, splashproof according to IP54
- Extremely bright illumination, 7000K colour temperature
- 220 Lm (3W LED) + 1000 Lm (10W LED) luminosity
- Variable light output, 50% | 100%
- Operating time:
  - 10W LED: - Approx. 3 hours with 100% light output
  - Approx. 6 hours with 50% light output
  - 3W LED: - Approx. 12 hours with 100% light output
  - Approx. 24 hours with 50% light output
- 3.5 hours charging time using power unit supplied
- Charger: 100 – 240 V AC plug-in power supply (5V/2A DC)
- 12V KFZ charging cable
- Adjustable magnetic stand
- With hook for hanging
- With belt clip

Art. no. 130348  
LED 10W + LED 3W



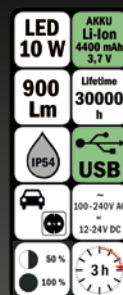
360° | 130348



## Compact floodlight „HUPlight10pro“

- Integrated Li-Ion 3.7V / 4.4Ah battery
- **10 watt LED**
- High-quality and solid housing made of diecast aluminium, with plastic edge protector
- For use inside and out, splashproof according to IP54
- Extremely bright illumination, 6500K colour temperature
- 1000 Lm luminosity
- Variable light output, 50% | 100%
- Operating time:
  - Approx. 3 hours with 100% light output
  - Approx. 6 hours with 50% light output
- Approx. 4.75 hours charging time using power unit supplied
- Can be used to charge external devices via USB (power bank function)
- Charger: 100 – 240 V AC plug-in power supply (5 V/1A DC)
- 12V KFZ charging cable
- Adjustable stand

Art. no. 130344  
LED 10 Watt



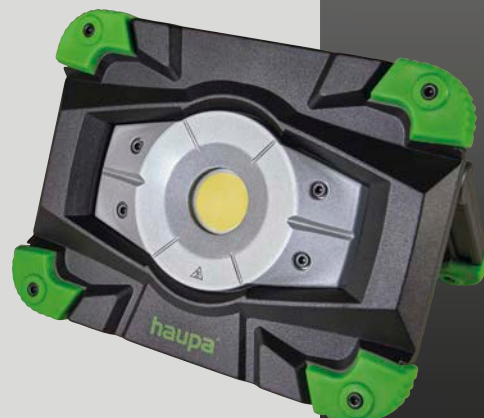
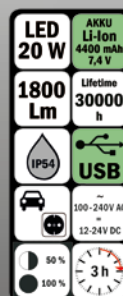
360° | 130344



## Compact floodlight „HUPlight20pro“

- Integrated Li-Ion 7.4V / 4.4Ah battery
- **20 watt LED**
- High-quality and solid housing made of diecast aluminium, with plastic edge protector
- For use inside and out, splashproof according to IP54
- Extremely bright illumination, 6500K colour temperature
- 2000 Lm luminosity
- Variable light output, 50% | 100%
- Operating time:
  - Approx. 3 hours with 100% light output
  - Approx. 6 hours with 50% light output
- 5 hours charging time using power unit supplied
- Can be used to charge external devices via USB (power bank function)
- Charger: 100 – 240 V AC plug-in power supply (12 V/1A DC)
- 12V KFZ charging cable
- Adjustable stand

Art. no. 130346  
LED 20 Watt



360° | 130346



## „System 4 – 70“ cable stripper

Cable stripping knife system with automatic blade protection and interchangeable bracket for stripping any popular round cables. (Main body plus interchangeable bracket item no. 201044, 1 spare blade in the handle)

### Scope

- Ø 4 – 70 mm cutting depth
- Inner blade: 35 mm
- Hook blade cutting depth: Level 1: 2.8 mm / Level 2: 3.4 mm / Level 3: 4.0 mm / Level 4: 4.6 mm
- Cable types: Round cable for flexible and fixed installation, moisture-proof cable



Art. no. 201040

Ø: 8 – 28 mm

360° | 201040



## „Promo set“ cable stripping system 4 – 70

Cable stripping knife system with automatic blade protection and interchangeable bracket for stripping any popular round cables.

### Contents:

- 201040
- 201044
- 201046

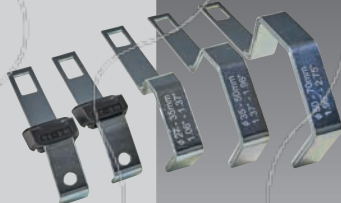


Art. no. 201055

Ø: 8–28, 27–35 mm

## Interchangeable bracket

Suitable for cable stripping system 4 – 70 (item no. 201040)



Art. no.	length	width	height	Ø
201042	108	28	33	4 – 16
201044	108	28	33	8 – 28
201046	133	15	49	27 – 35
201048	141	15	56	35 – 50
201050	156	15	69	50 – 70

Art. no. 201042\_50

## „Top Coax Plus“ cable stripper

**Use:** For stripping all popular coaxial cables and tightening F connectors (HEX 11)

**Scope:** Ø 4.8 – 7.5mm F connectors (HEX 11)

**Cable types:** Standard coaxial cable, e.g. TV coax, RG58U/RG59U, RG6, PVC flex 3 x 0.75mm<sup>2</sup>

360° | 201058



Art. no. 201058

Ø: 4,8 – 7,5 mm

## Hex socket wrench for coax

Wrench size 11 for items 201058 and 200035



Art. no. 201059

SW: 11

## Replacement hook blades

Suitable for cable stripping system 4 – 70 (item no. 201040)



Art. no. 201052

Set

## „Profi set“ cable stripping system 4 – 70

In shockproof plastic boxes, stackable, dimensions: (L 260mm, W 154mm, H 57mm) Set: 6-piece

### Contents:

- 201040
- 201042
- 201044
- 201046
- 201048
- 201050



Art. no. 201054

Set: 6 pieces

360° | 201054



## „XL“ cable stripper

**Use:** For stripping round cables with a round cut, extra long for deep flush-mounted boxes

**Scope:** 8 – 13mm

**Cable types:** Round cable for flexible and fixed installation, moisture-proof cable

### Material:

**Casing:** Polyamide (PA),

**Blade:** Speciality steel, hardened, coated with titanium nitride

Video 201045



Art. no. 201045

Ø: 8 – 13 mm

360° | 201045



**haupa**

... convincing solutions



## Installation case „Extreme“

Art. no. 220311  
581 x 455 x 381 mm

Unloaded tool trolley, developed specifically for professionals for transporting a variety of hand tools, power tools and spare parts, making it the perfect companion. In a robust injection-moulded copolymer polypropylene case that can withstand shocks, rough use and extreme weather conditions, with two side handles, one extendible trolley handle (up to 990mm long) and four sturdy and low-noise wheels. The upper compartment, sealed under the top lid, contains a removable tray for spare hand tools which are arranged in a deeper section, where, for example, a laptop could be stored. The lower compartment, protected by a foldable front door, can hold 3 to 8 removable drawers of variable heights (30-60-95mm), with a variety of optional inner configurations, such as, for example, bicolour foam layers, trays for small items and even specially developed tool palettes for all types of small and large hand tools. All drawers can be opened fully and are self-locking to prevent items accidentally falling out. A central key lock and metal reinforced padlock ensure that all compartments are fully secured using a single key.

- 2 carry handles on the sides
- Telescopic handle for trolley function
- 4 robust and low-noise wheels
- Drawer system on the front
- Removable tray in the upper compartment
- Central lock with key
- Space for labels to mark contents
- 2 robust cover fastenings
- 2 robust locks for the front flap
- Fully configurable drawers
- Stackable

14,1 kg

360° | 220311





## Tool case trolley „Extreme“

Empty, waterproof and perfectly sealed thanks to the embedded neoprene O rings and pressure relief valve, this case provides absolute protection for your tools. Manufactured from durable, light polypropylene, it is equipped with tough locks and an ergonomic handle. These are ideal for use in harsher environments, e.g. in the industrial, aviation, military and marine sectors.

- Waterproof polypropylene case
- Waterproof and airtight according to IP 67
- Airworthy
- Extendible handle for trolley function
- Stackable
- Corrosion-resistant, sand and dust-tight
- Corrosion-resistant metal hinge
- Shock and crushproof
- For use in temperatures between -33°C and +90°C
- Ergonomic and rubberised handle
- Sturdy and user-friendly locks
- Manual pressure relief valve
- Embedded O ring seal in the lid



Art. no. 220299  
517 x 277 x 217 mm

7,50 kg

## SysCon transport system

For simple and flexible transportation of HAUPA ABS SysCon plastic boxes

- SysCon lockable thanks to lateral snap latches on the transport system
- Metal plate with 4 castors, 2 lockable
- Max. load: 200 kg



Art. no. 220653  
470 x 240 x 105 mm

**SysCon**



## Tool holder for construction buckets

Tool bag for hanging up/covering in a commercially available 10L bucket, 30 exterior pockets/compartments, 14 inner pockets/compartments, 1 hammer loop, 1 loop with carabiner, stain-resistant, double cross-seam stitching for high load capacity, material: extra strong 1680D polyester, colour: black, green.



Art. no. 220313  
460 x 280 x 40 mm

Supplied without buckets!



**haupa®**

... convincing solutions

## Cable ties

### „UV“ heat-resistant cable ties, black

Material nylon 6/6, colour black, UL94V-2, for high temperature applications between -40°C and +145°C, UV-stabilized



Art. no.	length	width	PU	PrU		
263020	100	2,5	100	100		
263022	161	2,5	100	100		
263024	200	2,5	100	100		
263026	199	4,6	100	100		
263028	302	4,6	100	100		
263030	370	7,5	100	100		

### Flame retardant cable ties

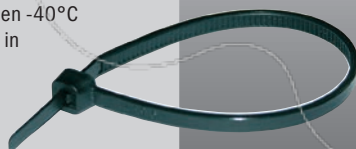
Material nylon 6/6, colour ivory, UL94V-0, for use in temperatures between -40°C and +85°C



Art. no.	length	width	PU	PrU		
263050	80	2,5	100	100		
263056	140	3,6	100	100		
263064	385	4,6	100	100		
263058	160	4,8	100	100		
263066	290	7,6	100	100		

### HUPImpact cable ties

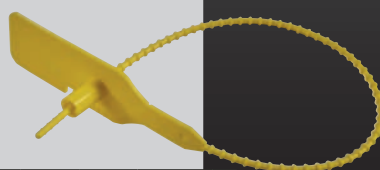
Material shock-resistant nylon 6/6, colour black, UL 94HB, for use in temperatures between -40°C and +80°C, extremely high flexibility in cold environments



Art. no.	length	width	PU	PrU		
263100	199	4,6	100	100		
263102	288	4,6	100	100		
263104	302	4,6	100	100		
263106	371	4,6	100	100		
263108	290	7,5	100	100		
263110	370	7,5	100	100		
263112	774	8,7	100	100		

### HUPsecure cable ties

Material PP, colour: yellow, can be used as a seal / connector



Art. no.	length	width	PU	PrU		
263200	245	3,6	100	100		
263204	295	3,6	100	100		
263208	397	3,6	100	100		

### Heat-resistant cable ties

Material nylon 6/6, colour light green, UL94V-2, for high temperature applications between -40°C and +105°C

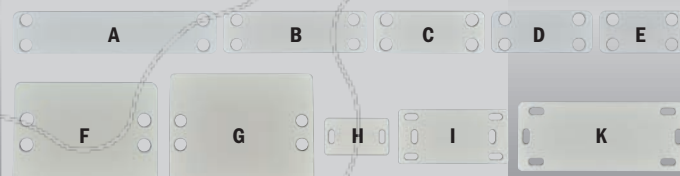


Art. no.	length	width	PU	PrU		
263000	100	2,5	100	100		
263004	200	2,5	100	100		
263006	120	3,6	100	100		
263008	160	4,6	100	100		
263010	199	4,6	100	100		
263012	370	7,5	100	100		

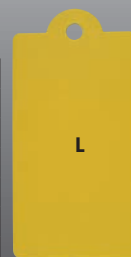
## Identification

### Identification label for cable ties / marking cables

Material PE, for marking cables, pipes and lines, low weight, permanent labelling



Art. no.	length	width	height	PU	PrU		
262179	26	15,2	0,8	100	100		H
262180	42,2	21,2	1,0	100	100		I
262181	60,8	25,2	1,2	100	100		K
262182	60,0	50,0	1,0	100	100		G
262183	38,5	19,1	0,4	100	100		E
262184	45,3	19,1	0,4	100	100		D
262185	50,5	19,1	0,4	100	100		C
262186	65,0	19,1	0,4	100	100		B
262187	63,8	44,8	0,4	100	100		F
262188	90,0	19,1	0,4	100	100		A
262189	160,0	80,0	0,6	100	100		L



May 2018

### Labelling box

Material PE, for attaching using cable ties (widths up to 4.8mm)

**Instructions:** Open box, insert labelled paper, snap box shut and attach using cable ties



Art. no.	length	width	height	PU	PrU		
262190	11,5	32,6	3,0	100	100		
262191	19,1	43,5	4,6	100	100		



May 2018

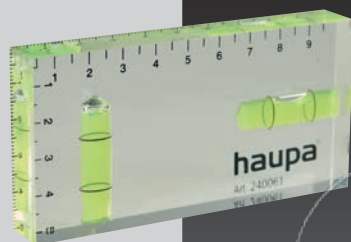


## „HUPmini“ spirit level

Made of perspex, with 2 levels (horizontal and vertical), with 2 measurement scales (0 – 10 cm and 0 – 5 cm)

Art. no. 240061  
100 x 50 x 15 mm

360° | 240061



## Heat-shrinkable end caps

- Designed with a layer of spiral coated hot melt adhesive in the internal surface of the end cap.
- Provides highly resistant to moisture, fungus, and corrosion.
- Recommended for use both in open air and on underground power distribution cables with PVC, lead or XLPE sheaths.
- Shrinkable Ratio: 2:1.
- Electrical insulation to 1000V.
- Easy installation over the cable end.
- Abrasion resistance and mechanical protection.



Art. no.	Kabel-Ø	KaL	WaSt	PU	PrU	
267500	4 - 10	15	2,6	100	100	
267502	6 - 16	25	2,8	50	100	
267506	18 - 32	40	3,3	25	100	
267508	28 - 48	50	3,5	10	100	
267510	45 - 68	55	4,0	10	100	
267512	55 - 90	70	4,0	25	100	
267514	65 - 110	70	4,0	20	100	

KaL = Cable length WaSt = Wall thickness

## End sleeves

### End sleeves DIN colour range

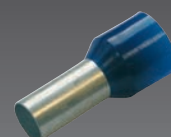
- insulated
- Electrolytic copper, tin-plated
- Dimensions to DIN 46228. Part 4
- DIN colour range III



Art. no.	CSS	TL	PU	PrU	
272803	0,75	10	100	1000	
272804	1	10	100	1000	
272812	2,5	10	100	1000	

### End sleeves, colour range II, (german)

- insulated
- Electrolytic copper, tin-plated
- Colour range II, german



Art. no.	CSS	TL	PU	PrU	
272721	0,75	10	100	1000	
272723	1	10	100	1000	
272725	1,5	10	100	1000	

## PVC-insulated

PVC

### Ring terminals

- of electrolytic copper, tin-plated, soldered
- **PVC-insulated**, with expanded insulating sleeve
- suitable for harmonised cables
- Easy Entry

PVC  
-105°/600V



Art. no.	CSS	M	B	PU	PrU	
260243	0,2 - 0,5	2	5	100	100	
260245	0,2 - 0,5	3	5	100	100	
260246	0,2 - 0,5	3,5	6	100	100	
260247	0,2 - 0,5	4	6,5	100	100	
260248	0,2 - 0,5	5	8	100	100	

haupa®

... convincing solutions

## Ring terminals DIN 46237

- of electrolytic copper, tin-plated, soldered
- **PC-insulated**, with expanded insulating sleeve
- suitable for harmonised cables
- Easy Entry



Art. no.	CSS	M	PU	PrU		
340256	0,5 - 1,0	4	100	100		
340258	0,5 - 1,0	5	100	100		
340270	1,5 - 2,5	4	100	100		
340272	1,5 - 2,5	5	100	100		
340274	1,5 - 2,5	6	100	100		
340288	4,0 - 6,0	6	100	100		
340290	4,0 - 6,0	8	100	100		



## Socket sleeves (female)

- Brass, tin-plated
- **PC-insulated**
- with vibration-free copper sleeve
- Easy Entry

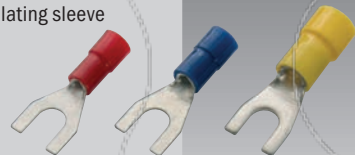


Art. no.	CSS	plug	PU	PrU		
340392	0,5 - 1,0	6,3 x 0,8	100	100		
340394	1,5 - 2,5	6,3 x 0,8	100	100		
340396	4,0 - 6,0	6,3 x 0,8	100	100		



## Fork terminals DIN 46237

- of electrolytic copper, tin-plated, soldered
- **PC-insulated**, with expanded insulating sleeve
- suitable for harmonised cables
- Easy Entry

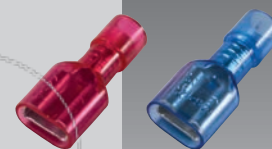


Art. no.	CSS	M	PU	PrU		
340304	0,5 - 1,0	4	100	100		
340314	1,5 - 2,5	4	100	100		
340322	4,0 - 6,0	6	100	100		



## Socket sleeves (female), fully-insulated

- Brass, tin-plated
- **PC-insulated**
- with vibration-free copper sleeve
- Easy Entry



Art. no.	CSS	plug	PU	PrU		
340414	0,5 - 1,0	6,3 x 0,8	100	100		
340416	1,5 - 2,5	6,3 x 0,8	100	100		



## Butt connectors

- of electrolytic copper, tin-plated
- **PC-insulated**, with expanded insulating sleeve
- suitable for harmonised cables
- Easy Entry

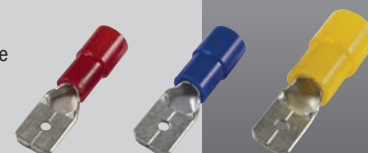


Art. no.	CSS	PU	PrU		
340350	0,5 - 1,0	100	100		
340352	1,5 - 2,5	100	100		
340354	4,0 - 6,0	100	100		



## Flat terminals

- Brass, tin-plated
- **PC-insulated**
- with vibration-free copper sleeve
- Easy Entry



Art. no.	CSS	plug	PU	PrU		
340422	0,5 - 1,0	6,3 x 0,8	100	100		
340424	1,5 - 2,5	6,3 x 0,8	100	100		
340426	4,0 - 6,0	6,3 x 0,8	100	100		





### Ring terminals „ECO-Line“

- of electrolytic copper, tin-plated, **not soldered**
- **PVC-insulated**, with expanded insulating sleeve
- suitable for harmonised cables



**PVC**  
ECO-Line  
-75°/300V

Art. no.	CSS	M	PU	PrU	
370256	0,5 – 1,0	4	100	100	
370258	0,5 – 1,0	5	100	100	
370270	1,5 – 2,5	4	100	100	
370272	1,5 – 2,5	5	100	100	
370274	1,5 – 2,5	6	100	100	
370288	4,0 – 6,0	6	100	100	
370290	4,0 – 6,0	8	100	100	

### Socket sleeves (female) „ECO-Line“

- Brass, tin-plated
- **PVC-insulated**
- with vibration-free copper sleeve



**PVC**  
ECO-Line  
-75°/300V

Art. no.	CSS	plug	PU	PrU	
370392	0,5 – 1,0	6,3 x 0,8	100	100	
370394	1,5 – 2,5	6,3 x 0,8	100	100	
370396	4,0 – 6,0	6,3 x 0,8	100	100	

### Fork terminals „ECO-Line“

- of electrolytic copper, tin-plated, **not soldered**
- **PVC-insulated**, with expanded insulating sleeve
- suitable for harmonised cables

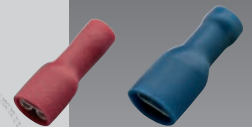


**PVC**  
ECO-Line  
-75°/300V

Art. no.	CSS	M	PU	PrU	
370304	0,5 – 1,0	4	100	100	
370314	1,5 – 2,5	4	100	100	
370322	4,0 – 6,0	6	100	100	

### Socket sleeves (female), fully-insulated „ECO-Line“

- Brass, tin-plated
- **PVC-insulated**
- with vibration-free copper sleeve

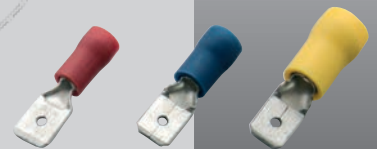


**PVC**  
ECO-Line  
-75°/300V

Art. no.	CSS	plug	PU	PrU	
370414	0,5 – 1,0	6,3 x 0,8	100	100	
370416	1,5 – 2,5	6,3 x 0,8	100	100	

### Flat terminals „ECO-Line“

- Brass, tin-plated
- **PVC-insulated**
- with vibration-free copper sleeve



**PVC**  
ECO-Line  
-75°/300V

Art. no.	CSS	plug	PU	PrU	
370422	0,5 – 1,0	6,3 x 0,8	100	100	
370424	1,5 – 2,5	6,3 x 0,8	100	100	
370426	4,0 – 6,0	6,3 x 0,8	100	100	

### Butt connectors „ECO-Line“

- of electrolytic copper, tin-plated
- **PVC-insulated**, with expanded insulating sleeve,
- suitable for harmonised cables



**PVC**  
ECO-Line  
-75°/300V

Art. no.	CSS	PU	PrU	
370350	0,5 – 1,0	100	100	
370352	1,5 – 2,5	100	100	
370354	4,0 – 6,0	100	100	

## Dowel assortment

### Push-through expansion dowel

#### Suitability

- For all concrete and masonry building materials, with limitations for cavity building materials
- For fixing all items which can be attached using wood and chipboard screws

#### Features

- Three-way split of the expansion part for guiding screws perfectly and centrally
- Quicker installation and higher extraction value
- Support and rotating construction wedges ensure good anti-twist protection
- Optimum expansion behaviour in both solid and softer materials and in hollow and perforated bricks
- Passage opening in the dowel tip makes screwing easier



Art. no.	Ø x length	screw-Ø	depth	PU	PrU	
794002	6 x 30	3,5 - 5,0	40	100	100	
794004	8 x 40	4,5 - 6,0	50	100	100	

### Countersunk nail dowel

#### Suitability

- For concrete, solid brick, with limitations for aerated concrete and hollow concrete blocks

#### Features

- Time-saving fixing system consisting of one expansion dowel and one expansion nail
- Pre-assembled system: The expansion nail fixes firmly into the dowel.
- Hammer-in stop prevents premature expansion
- The dowel and fixed item can be removed by simply unscrewing the expansion nail from the dowel



Art. no.	Ø x length	screw	strength	PU	PrU	
794020	5 x 30	PZ	5	100	100	+
794022	5 x 50	PZ	25	100	100	+
794024	6 x 40	PZ	10	50	100	+
794026	6 x 60	PZ	30	50	100	+
794028	6 x 80	PZ	50	50	100	+
794030	8 x 60	PZ	20	50	100	+

### Expansion dowel sleeve

#### Suitability

- For all concrete and masonry building materials, with limitations for cavity building materials
- For fixing all items which can be attached using wood and chipboard screws

#### Features

- Three-way split of the expansion part for guiding screws perfectly and centrally
- Quicker installation and higher extraction value
- Support and rotating wedges ensure good anti-twist protection
- Optimum expansion behaviour in both solid and softer materials and in hollow and perforated bricks
- Passage opening in the dowel tip makes screwing easier
- with additional collar



Art. no.	Ø x length	screw-Ø	depth	PU	PrU	
794012	5 x 25	2,5 - 4,0	35	100	100	
794014	6 x 30	3,5 - 5,0	40	100	100	
794016	8 x 40	4,5 - 6,0	50	50	100	
794018	10 x 50	6,0 - 8,0	60	25	100	

### Aerated concrete dowel with setting tool

#### Suitability

- For porous concrete (aerated concrete)

#### Features

- Time-saving fixing system
- Cutting into the building material guarantees expansion-free anchoring
- Use in electrical operations thanks to non-conductive plastic
- Solid edge prevents slide-in in the drilled hole and ensures exact screw depth
- Includes reusable setting tool



Art. no.	Ø x length	screw-Ø	depth	PU	PrU	
794040	10 x 50	4,0 - 6,0	60	50	100	



## Universal metal dowel

### Suitability

- Concrete, solid brick, porous concrete, limitations for perforated bricks and hollow concrete blocks

### Features

- Perfect screw guidance thanks to ribbed internal geometry
- Fire-proof pipe fixing according to technical guidelines for gas pipe installation (TRGI 3.3.7.2.)
- Dowel can be driven into porous concrete G2 and G4 without pre-drilling.



Art. no.	Ø x length	screw-Ø	depth	PU	PrU
794050	6 x 32	5,0 - 6,0	40	200	100
794052	8 x 60	6,0 - 8,0	70	100	100

## Plasterboard dowel with setting tool

### Suitability

- Plasterboard, limitations for full plasterboard and porous concrete

### Features

- Time-saving fixing system with dowel and setting tool
- Perfect insertion thanks to streamlined dowel tip
- Cutting into the building material guarantees optimum anchoring
- Use in electrical operations thanks to non-conductive plastic
- Includes reusable setting tool



Art. no.	length	screw-Ø	depth	PU	PrU
794070	24	4,0 - 6,0	35/80	50	100

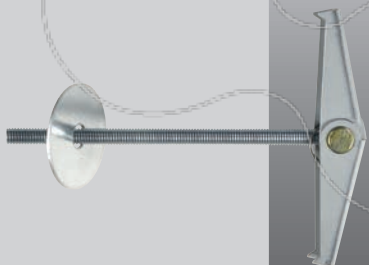
## Spring toggle

### Suitability

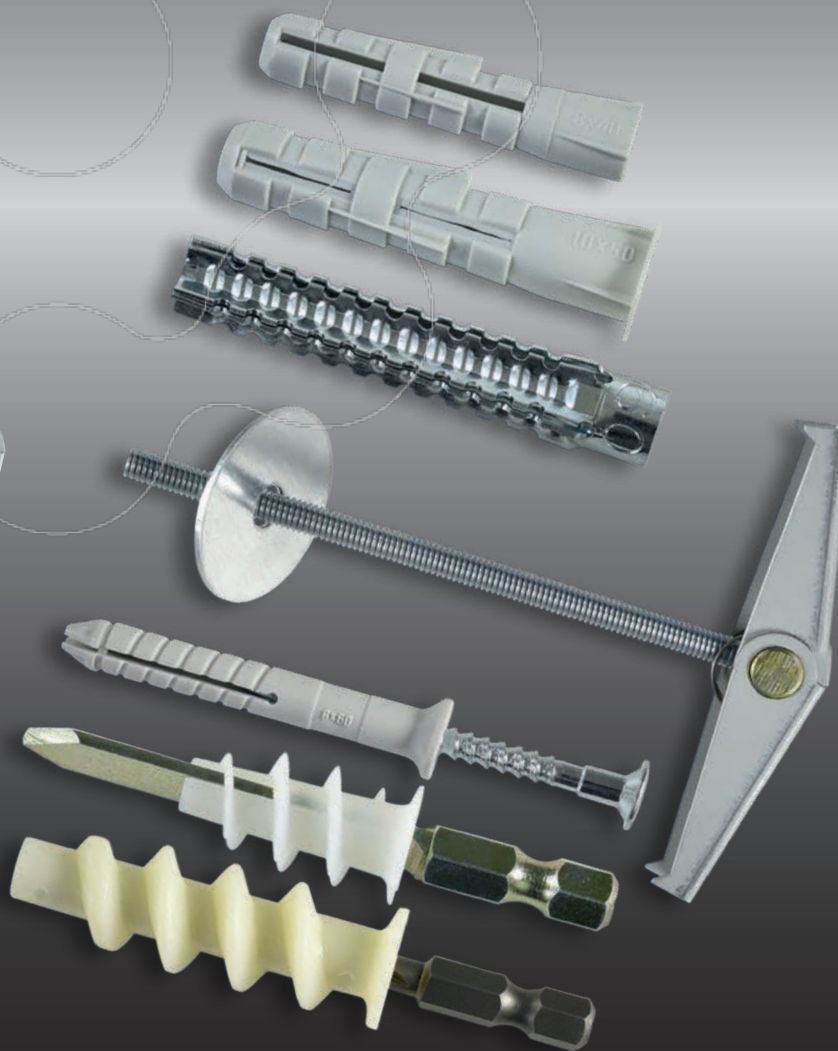
- Plasterboard and gypsum fibreboard, chipboard, fibre cement board, cavity brick covers, hollow body covers

### Features

- Special metal cavity anchor
- The side opens in any position in the hole using a spring mechanism
- Long threaded rod for a larger wall thickness
- Execution: Threaded rod with washer and hexagonal nut



Art. no.	Ø x length	bore hole-Ø	min/max	PU	PrU
794060	4 x 100	14	35/80	25	100
794062	5 x 100	16	45/80	20	100



**haupa**

... convincing solutions



#### QR-Codes:

This catalogue contains QR codes which ensure more transparent communication of additional information via video or similar media content.

Germany  
**HAUPA GmbH & Co. KG**  
 Königstraße 165-169  
 42853 Remscheid  
 Phone: +49 (0)2191 8418-0  
 Fax: +49 (0)2191 8418840  
 E-Mail: sales@haupa.com  
 www.haupa.com



**HAUPA-Group**  
 www.haupa.com

Your electric wholesaler:

Company stamp