

HAZARDOUS AREAS

Ex APPROVED EXPLOSION-PROOF PRODUCTS





TECHNOR®

LIGHTING FIXTURES

Fluorescent//LED//Halogen and H.I.D.

P. 4

CONTROL STATIONS

Increased safety//Flameproof

P. 6

Ex d COMPONENTS

Pushbuttons//Switches//Contacts//Pilot lights&lamps

P. 8

ENCLOSURES & CABINETS

Gas Group IIB+H2//Gas Group IIC

P. 10

JUNCTION BOXES

Increased safety//Flameproof

P. 12

CABLE GLANDS & FITTINGS

Non armoured cable//Armoured cable//Fittings

P. 13

VISUAL SIGNALS

P. 14

EARTHING SYSTEMS

P. 15

MARECHAL®

PLUGS, SOCKET-OUTLETS & BOXES

P. 16

NON Ex PRODUCTS FOR SAFE AREA

P. 18

LIGHTING FIXTURES

Fluorescent//LED//Halogen and H.I.D.

⊕ **Ex d, Ex de, Ex nA, Ex emb**

A complete range of lighting with dedicated design for hazardous areas. Manufactured either in stainless steel, marine grade aluminium and GRP with an extra Polyurethane painting.

Every single light brings excellent photometric properties.

Fluorescent and LED



EVF-P.. Series Fluorescent

⊕ **II 2 GD**

Ex e mb IIC T4 Gb

(normal service)

Ex d e mb IIC T4 Gb

(emergency service)

Ex tb IIIC T85°C Db IP66

- Copper free aluminum end cups
- UV treat polycarbonate housing
- Three layer extrusion polycarbonate: inner PC, top side white layer, UV filter layer
- LOOP IN-LOOP OUT facility



EVF-P.. Series LED

⊕ **II 2G Ex eb mb op is IIC T4**

Gb (normal service)

II 2G Ex eb mb op is IIC T4

Gb (emergency service)

II 2D Ex tb IIIC T135°C Db

IP66

- Copper free aluminum end cups
- UV treat polycarbonate housing
- Three layer extrusion polycarbonate: inner PC, top side white layer, UV filter layer
- LOOP IN-LOOP OUT facility
- Extended long life new LED technology with colour rendering 89



RMS.. Series Fluorescent & LED

⊕ **II 2G Ex de or emb IIC**

T6 to T4

II 2D Ex tD A21 Db IP65

T85°C to T135°C

- 0.8mm AISI 304 and 316L stainless steel body
- 4mm Tempered glass
- Side cable entries



G2X.. Series Fluorescent & LED

⊕ **II 3G Ex nA IIC T6 Gc**

II 3D Ex tc IIIC T85°C Dc

IP66

- For zone 2 and 22
- LED up to 44W and fluorescent both T8 and T5
- GRP housing with UV treat polycarbonate diffuser
- High impact resistance
- Emergency version 1h or 3h

Tank inspection light



EVCC-PR Series LED & Halogen

Ex II 2G Ex d IIC T3 Gb,
II 2D Ex tb IIIC Db IP66

- Copper free aluminum
- O-ring made of NBR
- Lamps included

Wellglass fixture



EV.. Series Halogen, Fluorescent & LED

Ex II 2G Ex d IIC Gb,
II 2D Ex tb IIIC Db IP66

- Copper free aluminum body
- Made to endure halogen or fluorescent lamp.
- Provided in a wide range of wattages

Spot light



LED EV.. Series LED

Ex II 2G Ex de IIC Gb,
II 2D Ex tb IIIC Db IP66

- Copper free aluminum
- free from infrared and UV wavelengths

Lowbay and Highbay fixture



EV.. Series H.I.D.

Ex II 2G Ex d IIC Gb or
II 2G Ex de IIC Gb
II 2D Ex tb IIIC Db IP66

- Copper free aluminum body
- Luminaires are made to endure in high intensity discharge lamps, MH, & HPS
- Provided in a wide range of wattages
- Option: Instant restrike

Floodlights



LED FL.. Series LED

Ex II 2G Ex d IIB T6 Gb or Ex d
IIB+H2 T6 Gb,
II 2D Ex tb IIIC T85°C Db
IP66

- Available with pole mounting and ceiling mounting
- Copper free aluminum + tempered glass
- Available with battery pack for 3h



FL.. Series H.I.D. and Halogen

Ex II 2G Ex d e IIB T3 Gb or
Ex d e IIB+H2 T3 Gb,
II 2D Ex tb IIIC T200°C
Db IP66

- Copper free aluminum + tempered glass
- Available in AISI316 Stainless steel
- Gasket to the lid guarantee IP65
- Available for MH/HPS H.I.D. lamps and Halogen
- AISI 304 Stainless steel bracket
- Option: Instant restrike

Hand lamps



EV.. Series Halogen & LED

Ex II 2G Ex d IIC Gb,
II 2D Ex tb IIIC Db IP66

- Portable lights with insulated handle + protection guard
- Copper free aluminum

See our **TECHNOR®**
main catalogue
for references
and spare parts.



CONTROL STATIONS

Increased safety//Flameproof

Ex d, Ex e, Ex de, Ex dem

Range of GRP, Copper free aluminium or Stainless Steel control stations designed to offer a flexible, lightweight and cost effective solution tailor made upon customer request. To be assembled with Ex de operators in case EF.. Ex de version and with PL.. operators in case of CP.. Ex d version.

Increased safety



EFXE Series - AISI316L

**Ex II 2G Ex de IIC Gb, Ex emb IIC Gb
II 2D Ex tb IIIC Db IP65/66**

- Stainless steel AISI-316L
- Acid treatment
- Hidden hinges
- Custom size up to 910x1140x500mm
- From -50°C to +60°C
- Suited for use ON and OFF-SHORE in petrochemical and marine applications



EFXE Series - Aluminium

**Ex II 2G Ex de IIC Gb, Ex emb IIC Gb
II 2D Ex tb IIIC Db IP65/66**

- Copper free aluminum
- From -50°C to + 60°C
- Provided in a wide range of sizes



EFE Series - GRP

**Ex II 2G Ex de IIC Gb, Ex emb IIC Gb,
II 2D Ex tb IIIC Db IP65/66**

- Made in GRP (Glass-fiber reinforced polyester) material
- Suited for use ON and OFF-SHORE in petrochemical and marine applications
- From -50°C to + 60 °C
- Provided in a wide range of sizes



Flameproof



CP../EFDCN.. Series - Push button stations

II 2G Ex d IIC Gb

II 2D Ex t IIIC Db IP66

- Copper free aluminum
- From -50°C to +60°C (ATEX) - From -60°C to +60°C (IECEX)



CP../EFSRC.. Series - Selector switches

II 2G Ex d IIC Gb

II 2D Ex t IIIC Db IP66

- Copper free aluminum
- Selectors can be customized upon customer request
- From -50°C to +60°C (ATEX) - From -60°C to +60°C (IECEX)



EPKZM Series - Motor protector

II 2G Ex d IIC Gb

II 2D Ex tb IIIC T85°C Db IP66/67

- Copper free aluminum
- Used to house motor protector circuit breakers up to 63A
- From -30°C to +55°C

Ex d COMPONENTS

Flameproof

Ex d components are available in a wide range of operators/pilot lights PL series and selectors PSRC series; allow numerous combinations with our CP./CPS.. EFDCN/EFSRC series.

PL.. series includes standard push buttons, emergency push buttons, key selector switches, pilot lights; mechanical operators allow the assembling of a maximum of four contacts.

PSRC.. series includes on-load switches, change over switches, step switches and selector customized upon request on the base of customer specification.

Pushbuttons



Momentary, Steady and Lockable

II 2G Ex d IIC

II 2D Ex tD A21 IP66/67

- PLA/PLB type
- Black, red, green, blue, yellow ,white
- Temperature from -50°C to +60°C
- ITH MAX. 6A
- Barrel thread : metric M32x1.5
- Compact
- fast installation and changes
- low maintenance costs

Emergency mushroom, Momentary or Steady, Twist to release or with key

II 2G Ex d IIC

II 2D Ex tD A21 IP66/67

- PLC-S/PLC-S-F/PLC-I type
- Red color
- With or without key
- Temperature from -50°C to +60°C
- ITH MAX. 6A
- Barrel thread : metric M32x1.5
- Compact
- Fast installation and changes
- Low maintenance costs

Mechanical Operators

II 2G Ex d IIC

II 2D Ex tD A21 IP66/67

- PLC RESTORE/PLC RESET type
- Green,red , black
- Temperature from -50°C to +60°C
- Barrel thread: metric M32x1,5 and M12x1,5
- Compact
- Fast installation and changes
- Low maintenance costs





Switches



Keyed Selector

II 2G Ex d IIC

II 2D Ex tD A21 IP66/67

- PLF type
- Key withdrawal or not
- Temperature from -50°C to +60°C
- ITH MAX. 6A
- Barrel thread : metric M32x1.5
- Compact
- Fast installation and changes
- Low maintenance costs



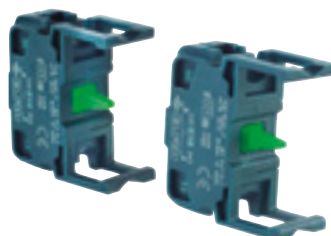
On-load Switches

II 2G Ex d IIC

II 2D Ex tD A21 IP66/67

- PSRC type
- From 1 to 4 number of poles
- From 20 to 36 A
- Temperature from -50°C to +60°C
- Barrel thread : metric M32x1.5
- Compact
- Fast installation and changes
- Low maintenance costs
- Switches can be customized upon customer request

Contacts



Normally Open

- Blue and red
- ITH MAX. 6A
- Compact
- Fast installation and changes
- Low maintenance costs



Normally Closed

- Blue and red
- ITH MAX. 6A
- Compact
- Fast installation and changes
- Low maintenance costs

Pilot lights & lamps



Pilot Lights

II 2G Ex d IIC

II 2D Ex tD A21 IP66/67

- Series lockable momentary push buttons
- PLB type
- White, red, green, yellow and blue
- Temperature from -50°C to +60°C
- Barrel thread : metric M32x1.5
- Compact
- Fast installation and changes
- Low maintenance costs



LED Lamps 12/24/48/ 110/220V

- LED type
- red, green, yellow, white and blue
- Temperature from -50°C to +60°C
- Compact
- Fast installation and changes
- Low maintenance costs

ENCLOSURES & CABINETS

Gas Group IIB+H₂ and IIC

Ex d IIB, IIB+H₂ and IIC

- High level of corrosion resistance
- Robust construction
- Consolidated safety product
- Highest level of achievable safety
- Ideal for extreme conditions

Gas Group IIB + H₂



EJB.. Series - Aluminium

Ex d IIB Gb or Ex d IIB+H₂ Gb
II 2D Ex tb IIC Db IP65 or 66 or 67

- Copper free aluminum
- Suited for indoor and outdoor applications
- Screws are made of AISI316 stainless steel
- From -50°C up to +60°C
- IP65/66/67



EJB.. Series - Stainless steel AISI316L or Galvanized carbon steel (iron)

Ex d IIB Gb or Ex d IIB+H₂ Gb
II 2D Ex tb IIC Db IP65 or 66 or 67

- Stainless steel AISI316 L
- Suited for indoor and outdoor applications
- Screws and hardware are made of AISI316 stainless steel
- From -50°C up to +60°C
- IP65/66/67
- Possibility of custom made dimensions

Gas Group IIC



Pressurized cabinets QPREX series - Stainless steel AISI316L, 304 or painted sendzimir steel

Ex pxb/pzc IIC T6 to T4 Gb/Gc
II 2D Ex pxb/pzc IIC T85°C to T135° C Db/Dc

- Modular and adaptable system
- Customized volume up to 10m³
- Ability to mount non Ex components



Gas Group IIC



GUB.. Series Aluminium

**Ex II 2G Ex d IIC Gb
II 2D Ex tb IIIC Db IP66**

- Copper free aluminum & Stainless steel AISI316L (upon request)
- Suited for indoor and outdoor applications
- From -50°C to +55°C (ATEX) – From -60°C to +60°C (IECEX)
- Stainless steel version: possibility of custom made dimensions



GUB../QL Series Aluminium

**Ex II 2G Ex d IIC Gb
II 2D Ex tb IIIC Db IP66**

- Copper free aluminum & Stainless steel AISI316L (upon request)
- Suited for indoor and outdoor applications
- Can be equipped with different components like push buttons, rotating switches..
- From -50°C to +55°C (ATEX) – From -60°C to +60°C (IECEX)
- Stainless steel version: possibility of custom made dimensions



GUB/EMH.. Series Aluminium

**Ex II 2G Ex d IIC Gb
II 2D Ex tb IIIC Db IP66**

- Copper free aluminum & Stainless steel AISI316L (upon request)
- Suited for indoor and outdoor applications
- From -50°C to +55°C (ATEX) – From -60°C to +60°C (IECEX)
- Window diameter from 155 to 230 mm
- Stainless steel version: possibility of custom made dimensions



CPS../EMH Aluminium

**Ex II 2G Ex d IIC Gb
II 2D Ex tb IIIC Db IP66
II 2G Ex db IIC Gb**

- Copper free aluminum
- Suited for indoor and outdoor applications
- From -50°C to +60°C (ATEX) – From -60°C to +60°C (IECEX)



JUNCTION BOXES

Increased safety//Flameproof

Ex d, Ex e and Ex ia

The SB range of stainless steel AISI-316L enclosure used as instrument and electrical terminal boxes, where an explosive atmosphere may be present and are especially recommended for chemical agent environments, sea-water corrosion resistance and extremes of low and high temperature, offshore and onshore oriented.

The CP../CPS.. range of copper free aluminium enclosures, used for terminals wiring, grants Ex d or Ex e mode of protection. Internal and external screws are made of AISI316 stainless steel. This series is tailor made on the base of customer specification, including quantity and type of terminals. These boxes are suitable for hazardous areas of industrial plants for indoor and outdoor applications.

Increased safety



AQ../AR.. Series GRP

Ex II 2G Ex e IIC Gb/Ex ia IIC Gb, II 2D Ex tb IIIC Db IP66

- Made in GRP (Glass-fiber reinforced polyester) material
- From -50°C to +60°C



AQ../AR.. Series Aluminium low thickness

Ex II 2G Ex e IIC Gb/Ex ia IIC Gb, II 2D Ex tb IIIC Db IP66

- Copper free aluminum
- From -50°C to +60°C



AQ../AR.. Series Aluminium high thickness

Ex II 2G Ex e IIC Gb/Ex ia IIC Gb II 2D Ex tb IIIC Db IP65

- Copper free aluminum
- From -50°C to +60°C
- External hardware and screws are made in AISI304 Stainless steel



SB.. Series AISI316 L Stainless steel

Ex II 2G Ex e IIC Gb/Ex ia IIC Gb II 2D Ex tb IIIC Db IP66/67

- Made of AISI316L Stainless steel
- Dimension can be customized up to 910 x 1140 x 500mm
- Acid treatment
- From -50°C to +60°C

Flameproof



B2x.. Series GRP

Ex II 2G Ex e IIC Gb/Ex ia IIC Gb II 2D Ex tb IIIC Db IP66/67

- From -55°C to +60°C
- 2 Sizes 120x120 mm
160x160 mm
- Hinges Version available



CP../CPS.. Series Aluminium

Ex II 2G Ex d IIC Gb II 2D Ex tb IIIC Db IP66 2G Ex db IIC Gb

- Copper free aluminum
- Screws are made of AISI316 L
- From -50°C to + 60°C (ATEX) - From -60°C to +60°C (IECEx)

CABLE GLANDS & FITTINGS

Unarmoured cable//Armoured cable//Fittings

Ex d/e

Single seal, double seals cable glands, suitable for unarmoured and armoured cables. Nickel-chrome plated brass, stainless steel and aluminium made, hexagon shape, anti-ageing EPDM oil resistant gaskets. These cable glands are suitable for Category II (classified Area Zone 1 & 2 and Zone 21 & 22) and category I (Mines).

Unarmoured cable



Single/Double Seal

II 2GD Ex db/eb IIC
I M2 Ex db/eb I
Ex tb IIIC IP66

- Nickel chrome plated brass – AISI316L-Stainless steel (other material upon request)
- Internal seal are in EPDM
- From -52°C to +110°C
- Robust
- Suitable for offshore application



Armoured cable



Single/Double Seal

II 2GD Ex db/eb IIC
I M2 Ex db/eb I
Ex tb IIIC IP66

- Nickel chrome plated brass – AISI316L Stainless steel (other materials upon request)
- From -52°C to +110°C
- Internal seals are in EPDM (Ethylene-Propylene diene Monomer)
- Robust
- Suitable for offshore application



Fittings



Unions



Open elbows



Sealing fittings



Bushings



Nipples



Hexagonal plugs



Couplings



Reductions



Female-Female elbow



Adaptors

VISUAL SIGNALS

Warning Lights//Aircraft obstruction signals

Ex d, Ex de IIC

The state-of-the-art in AWL... Aircraft Warning Lights, LIOL, MIOL with LED technology, reliable long life and maintenance saving products, in compliance with ICAO and FAA, along with signalization unit like beacons, flashing unit, rotating light.

Warning Lights



EV../ROT Series Rotating Signal

Ex II 2G Ex d IIC Gb or
Ex de IIC Gb

II 2D Ex tb IIIC Db IP66

- Copper free aluminum + tempered glass
- Range of rotating lamp visual signals
- O-ring gaskets are made of NBR (Nitrile Rubber)
- The lamp is red (other colors are available upon request)
- From -52°C to +60 °C



EV../XN-MXN Series Xenoflash

Ex II 2G Ex d IIC Gb or
Ex de IIC Gb

II 2D Ex tb IIIC Db IP66

- Range of xenoflash visual signals complete with Fresnel lens available in 3 different luminous intensities : 2J, 6J, 15J
- Copper free aluminum + tempered glass
- O-ring gaskets are made of NBR (Nitrile Rubber)
- The lamp is red (other colors are available upon request)
- From -52°C to +60 °C

Aircraft obstruction signals



EV../WA.. series Low intensity (LIOL)

Ex II 2G Ex d IIC Gb, or
Ex de IIC Gb

II 2D Ex tb IIIC Db IP66

- Range of low intensity aircraft warning lights, for structures below 45mt
- Copper free aluminum
- Available with LED lamp
- Halogen versions supplied with red metacrilate dome
- From -52°C to +60 °C



EVCC.. series Medium intensity (MIOL)

Ex II 2G Ex d IIC Gb

II 2D Ex tb IIIC Db IP66

- Copper free aluminum
- Utilizes LED technology to deliver low heat dissipation + low W consumption and up to 100.000/hours maintenance free operation
- The product is fully compliant with ICAO Annex 14
- LED included
- Lamps colors : Red, white or red and white

EARTHING SYSTEMS

Earthing control system

Ex Ex d IIC T5 Gb

Control and discharge system for electrostatic charges suitable for road tankers, rail tankers and any movable tanker for dangerous items, ready for one/two double circuit clamps PTA ISEO-2. System is complete with arrest/consensus optical warning and changeover contact free from output voltage.

The need to transfer from one place to another dangerous flammable fuels and liquids as gasoline and diesel highlighted the serious risk due to uncontrolled discharge of static charges cumulated on movable tanker-units during transfers following the well known natural phenomena when connected to loading/downloading tools (fixed).

Earthing control system



GUMT

Ex II 2G Ex d IIC T5 Gb

II 2D Ex tb IIIC T100°C Db IP66

- Copper free aluminum
- System is complete with arrest/consensus optical warning and changeover contact free from output voltage
- From -20°C to +55°C
- 3 entries M20x1.5, one complete with plug

Clamp



PTA Series

Ex II 2G Ex d IIC T6

II 2D Ex tD A21 IP65 T85°C

- Reliable, robust, handy and easy to use
- They can be easily connected to any grip, even rusty ones
- 11 mt of cable length
- From -20°C to +55°C

PLUGS, SOCKET-OUTLETS & BOXES

DECONTACTOR™//Multi-contacts//Single-pole power connectors//Socket-boxes

The plugs and sockets as well as socket-outlet boxes and junction boxes in this range are meant for use in hazardous areas in compliance with the ATEX 2014/34/EU Directive and as per the IECEx in zones 1 and 2 (Gas) and zones 21 and 22 (Dust).

DECONTACTOR™ (switch rated plug & socket)



DXN - 20 A/32 A/63 A

II2 G D Ex de IIC Gb
Ex tb IIIC Db

- Integrated load-break switch
- Robust and compact design
- High performance GRP casing
- Self-ejecting version available
- IP66/IP67 water & dust-tight



DX - 20 A/32 A/63 A/125 A/200 A

II2 G D Ex de IIC
Ex tD A21 IP65

- Integrated load-break switch
- Locking in on/off positions by keying axis
- Corrosion-free metal casing
- IP65 water & dust-tight



DXA1 - 20 A

II2 G D Ex de IIC, Ex tb IIIC

- Integrated load-break switch
- IP66/67 water and dust tight
- Corrosion-free metal casing
- Lockable in connected or disconnected position with optional lockout shaft
- Low temperature rating of -55°C

Multi-contacts



PXN12C/DXN25C/ DXN37C - 10 A

Ex II2 G D Ex e IIC Gb

Ex tb IIIC Db

- From 12 to 37 contacts
- Crimp or soldered contact
- Quick and easy assembly and disassembly
- Locking in connected or disconnected position
- Corrosion-free metal casing



Single-pole power connectors



SPeX - 680 A

Ex II2 G D Ex e IIC Gb

Ex tb IIIC Db IP65/66

- Electromechanical interlocking system
- Mechanic and visual keying
- High performance poly casing
- IP65/IP66 water & dust-tight

Compact connectors



PNCX - 5 A

Ex II2 G D Ex e IIC, Ex tb IIIC

- Can be used in zones 1 and 2 (gas), 21 and 22 (dust)
- Compact and easy to use
- Standard IP66/IP67
- Long life, 2000 operations

Socket-boxes & Junction boxes



MXBS/MXBJ - Up to 680 A

Ex Ex eb IIC, Ex tb IIIC

- Intrinsic safety capability
- IP66 Water-and dust-tight
- GRP casing, aluminium, stainless steel AISI 316 L
- Assembly of multi-contact connectors and socket-outlets on the same enclosure
- From -55 °C to +60 °C

NON Ex PRODUCTS FOR SAFE AREA

Industrial power supply



DECONTACTOR™ & CONNECTORS 16 A to 250 A

- DSN, DS & DN DECONTACTOR™ ranges cover applications from 20 A to 250 A.
- PNC & PN are compact 16 A & 30 A connectors design for all type of environment found in many industrial sectors.

Signal & control



MULTICONTACT CONNECTORS 5 to 37 contacts - 5 A to 30 A Low currents: 4 mA to 20 mA

- Multicontact can hook up equipment to a power supply and transmit data.
- The silver-nickel alloy used for the butt contacts provides exceptional conductivity and longevity.
- Excellent resistance, even in harsh conditions, thanks to GRP or metal casing.
- The connectors can be mounted and demounted quickly and easily.

High current



PLUGS & SOCKETS AND CONNECTORS Up to 700 A - 1 000 V

- MARECHAL® high-current plugs offer a reliable solution for connections even under the harshest environments.



WEBSITE

- Retrieve your business contacts.
- Download our documentation related to your field of activity.
- Learn more about our group.
- Discover our new products.
- Follow our current events.
- Ask your questions online.

FIND ALL INFORMATION
ON OUR WEBSITE:



marechal.com



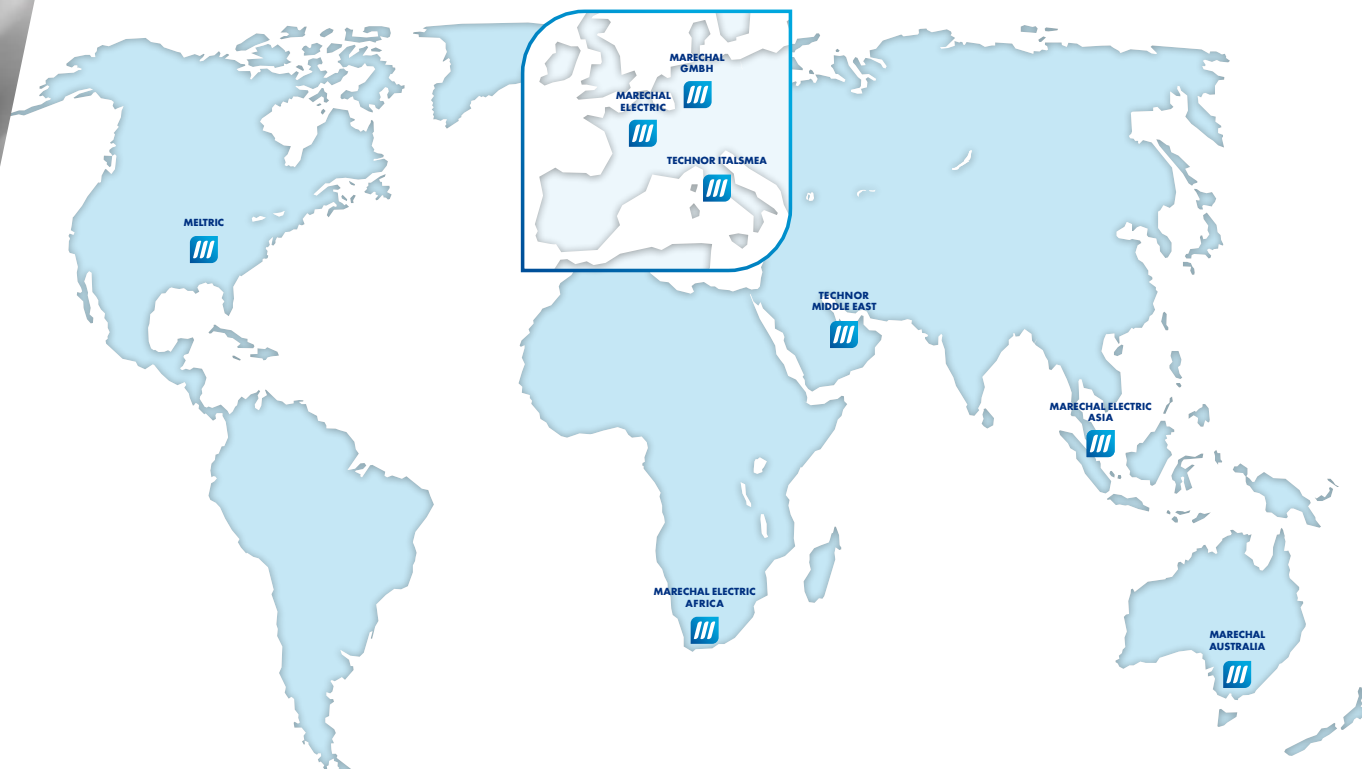
technor.com

NON CONTRACTUAL DOCUMENT AND PICTURES

All the indications appearing in this catalogue are indicative and could not constitute a commitment on our part. We reserve the right to alter specifications of our products without any prior notice in our efforts to continuously improve our products features. For your information, the most updated version is the one of our website **marechal.com**.



WORLD PRESENCE



MARECHAL ELECTRIC S.A.S (Head Office)

5, avenue de Presles
F-94417 Saint-Maurice Cedex
Phone : +33 (0)1 45 11 60 00
Fax : +33 (0)1 45 11 60 60
e-mail: contact@marechal.com

Africa SADC area

MARECHAL ELECTRIC AFRICA (PTY) LTD.
PO Box 13875 Witfield 1467
Unit A1 Harvard Lane
Aero Star Business Park
Jet Park Road, Jet Park
South Africa
Tel.: +27 11 894 7226/7/8
Fax: 086 604 1778
e-mail: sales.za@marechal.com

Asia

MARECHAL ELECTRIC Asia Pte Ltd
9 Tagore Lane
#01-05 9@Tagore
Singapore 787472
Tel.: +65 6554 2722
Fax: +65 6455 9077
e-mail: sales.asia@marechal.com

Australia

MARECHAL AUSTRALIA PTY LTD
20 Technology Circuit
HALLAM VIC 3803
Tel: +61 1300 661 830
Fax: +61 1300 663 510
e-mail: sales@marechal.com.au

Technor®

TECHNOR ITALSMEA S.p.A.
Via Italia 33,
20060 Gessate (MILANO)
Tel. : +39 02 95 00 151
Fax : +39 02 95 00 15 27
e-mail: sales@italsmea.com

Germany/Austria/Switzerland/ East Europe/Russia

MARECHAL GmbH
Im Lössenfeld 8
D-77731 Willstätt-Sand
Germany
Tel.: +49 (0)7852/91 96-0
Fax: +49 (0)7852/91 96-19
e-mail: info.de@marechal.com

Middle East

Technor Middle East DMCC
Unit No.2101, Fortune Executive
Tower, Plot No T1
Jumeirah Lakes Towers
P.O. Box 392054
Dubai, United Arab Emirates
Tel.: +971 4 362 1418
Fax: +971 4 362 1419
e-mail: sales.me@marechal.com

USA/Canada/Mexico

MELTRIC Corporation
4765 W. Oakwood Park Drive
Franklin WI 53132, USA
Tel.: +1 414 433 2700
Fax: +1 414 433 2701
e-mail: mail@meltric.com

For any other country or area, please contact head office.