

CUTTING BY REMOTE CONTROL



BATTERY POWERED HYDRAULIC CUTTING TOOL WITH REMOTE CONTROL

Your safety is important to us: When cutting overhead lines, there is always the risk of coming into contact with the tool or an electric arc from a live adjacent conductor. With our new, remote controlled cutting tools you remain on the ground at a safe distance. These tools are moved to their target via an hot-stick pole. This eliminates the risk of coming into contact with the current. You also save time and effort, since vehicle access or pole climbing equipment is no longer required.

- ▶ Tool with remote control e.g. for telescopic hot-stick poles
- ▶ ES20RMC: for cutting Al/St ropes (ACSR) to DIN EN 50182, solid Al/Cu cables to DIN EN 60228, Class 1 and laminated copper bus bars
- ▶ ES32RMC: for cutting multi-stranded Al/Cu cables, Class 2
- ▶ Extremely robust design and lightweight
- ▶ Slim cutting head - ideal when space is critical
- ▶ All tool data in view thanks to display and i-press app
- ▶ Powerful 18 V Li-Ion battery - high capacity, short charging time
- ▶ Can also be used as a normal cable cutter when the hot-stick holder is not attached

Characteristics

- All data can be easily read via Bluetooth
- Choose your battery system: Bosch or Makita
- Open head, rotatable
- Simple and safe: one-button operating concept for controlling all tool functions
- Effortless operations due to balanced centre of gravity, even when used with a telescopic hot-stick pole
- LED for work area illumination
- Quick motor stop for high user safety
- Automatic retraction when operation is complete
- Manual retract stop (MRS) for efficient operations
- Saves energy: motor stops after the operation
- Always ready-to-use thanks to battery charge and service display
- Simple one-hand control via remote control

Tip:



To check voltages of overhead lines, we recommend our contactless voltage detector e.g. PRX-500.


made in Germany



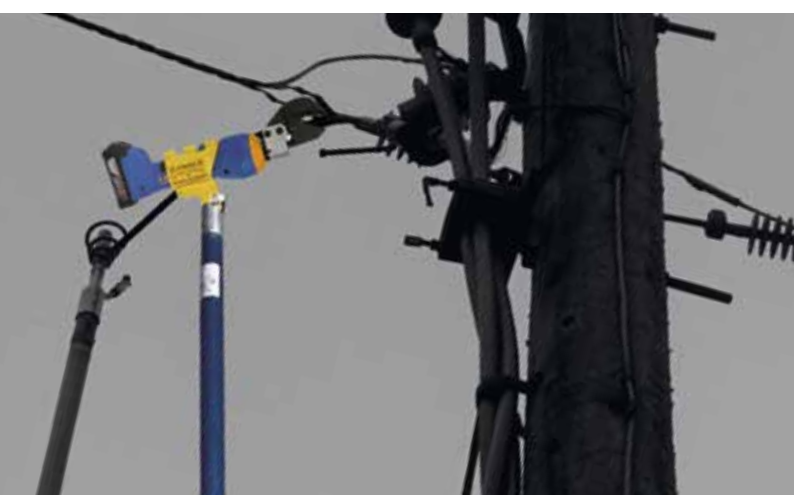
Technical data	
Cutting range	max. 20 mm dia. or max. 32 mm dia.
Cutting time	2 s to 8 s (depending on cable size/material thickness)
Charging time	15 min.
Weight incl. battery	2.0 kg
Ambient temperature	-10°C to +40°C
Bluetooth range	up to 20 m (depending on environment)

Item	Part No.
Battery powered hydraulic cutting tool 20 mm dia. (Bosch)	ES20RMCCFB
Battery powered hydraulic cutting tool 20 mm dia. (Bosch)*	ES20RMCCFB0000*
Battery powered hydraulic cutting tool 20 mm dia. (Makita)	ES20RMCCFM
Battery powered hydraulic cutting tool 20 mm dia. (Makita)*	ES20RMCCFM0000*
Battery powered hydraulic cutting tool 32 mm dia. (Bosch)	ES32RMCCFB
Battery powered hydraulic cutting tool 32 mm dia. (Bosch)*	ES32RMCCFB0000*
Battery powered hydraulic cutting tool 32 mm dia. (Makita)	ES32RMCCFM
Battery powered hydraulic cutting tool 32 mm dia. (Makita)*	ES32RMCCFM0000*

Scope of supply	Item no.
Bosch battery 18 V / 2.0 Ah, Li-Ion	RALB1EU
Bosch quick-charger for 18 V Li-Ion battery	LGLB1EU
Makita battery 18 V / 1.5 Ah, Li-Ion	RAL1
Makita quick-charger for 18 V Li-Ion batteries	LGL1
Hot-stick holder	HHRMCM
Remote control	BTC4
Plastic case	KKESRMC

Accessories	Item no.
Replacement blades	ES20E / ES32E
Bosch battery 18 V / 5.0 Ah, Li-Ion	RALB2EU
Makita battery 18 V / 4.0 Ah, Li-Ion	RAL40

* without battery and charger





OUR SERVICE, YOUR PEACE OF MIND FOR SAFETY

Our internal Service Center in Remscheid and over 50 authorised Service Centers worldwide, with their comprehensive technical maintenance and repair service, ensure that Klauke tools and devices have maximum functional capability and guarantee secure connections.

Our range of services comprises inspecting the tools on a regular basis, checking the functional quality through to repair work.

Because we know: far from ending at the time of delivery, our responsibility continues with an After Sales service tailored to your day-to-day needs.



This and further information can be found here!

Strong brands for your success:



Klauke[®]

HDE[®]

Gustav Klauke GmbH

Auf dem Knapp 46
42855 Remscheid
Germany

Phone: +49 (0) 2191 907 0
Fax: +49 (0) 2191 907 141

Email: info@klauke.textron.com
Internet: www.klauke.com