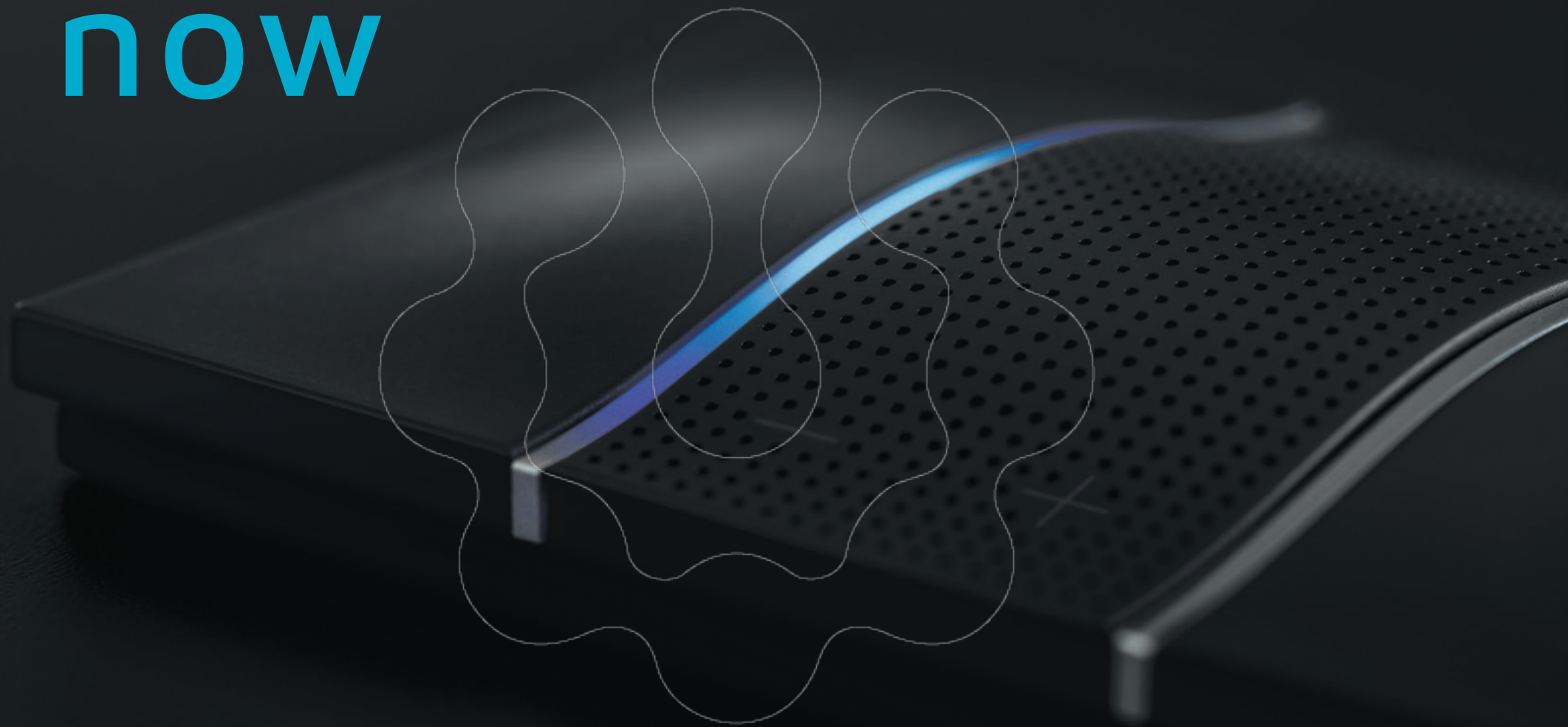


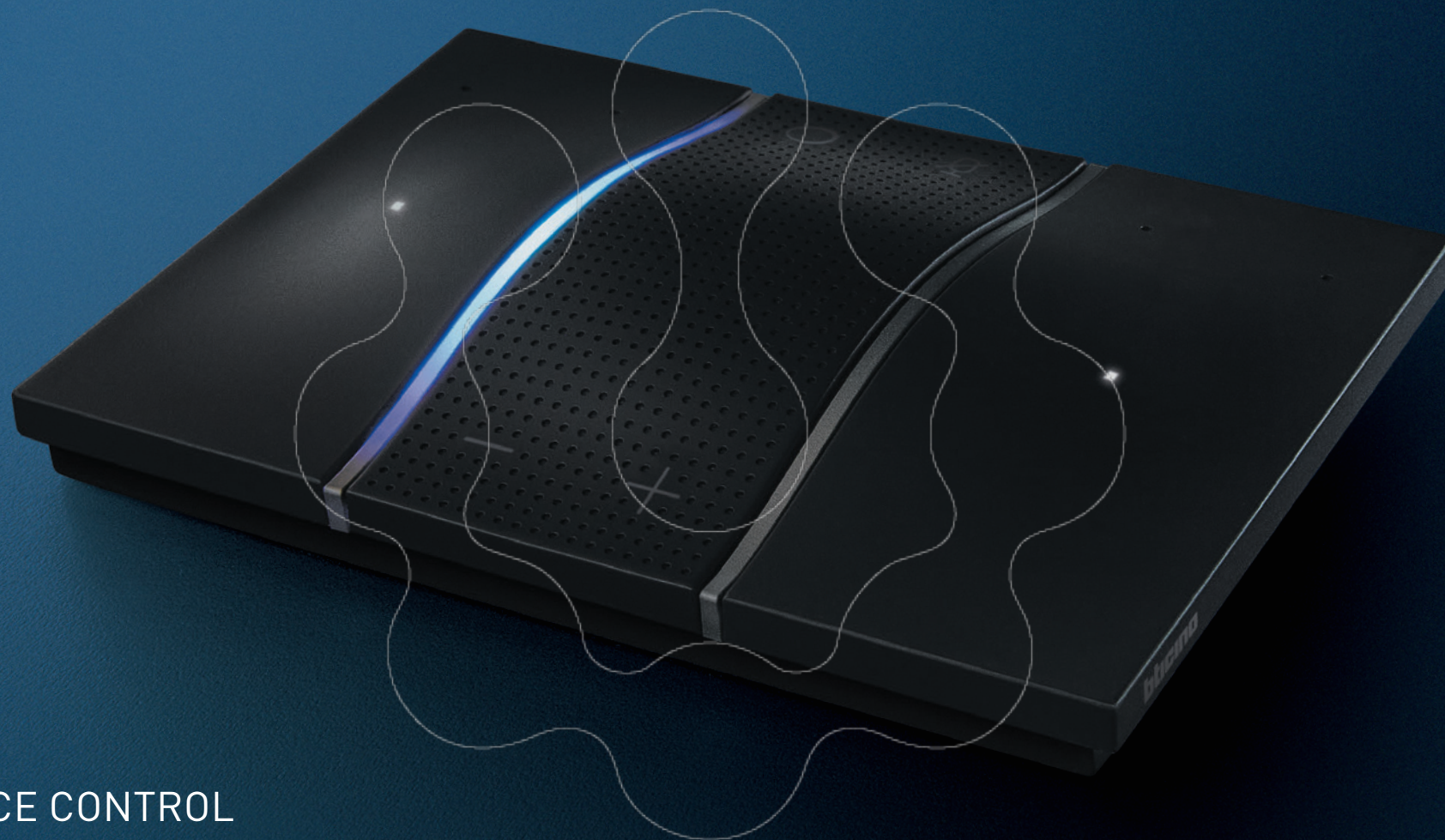
LIVING   
now



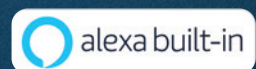
**b**ticino







VOICE CONTROL  
ALEXA NATIVE AT HOME







bhincino





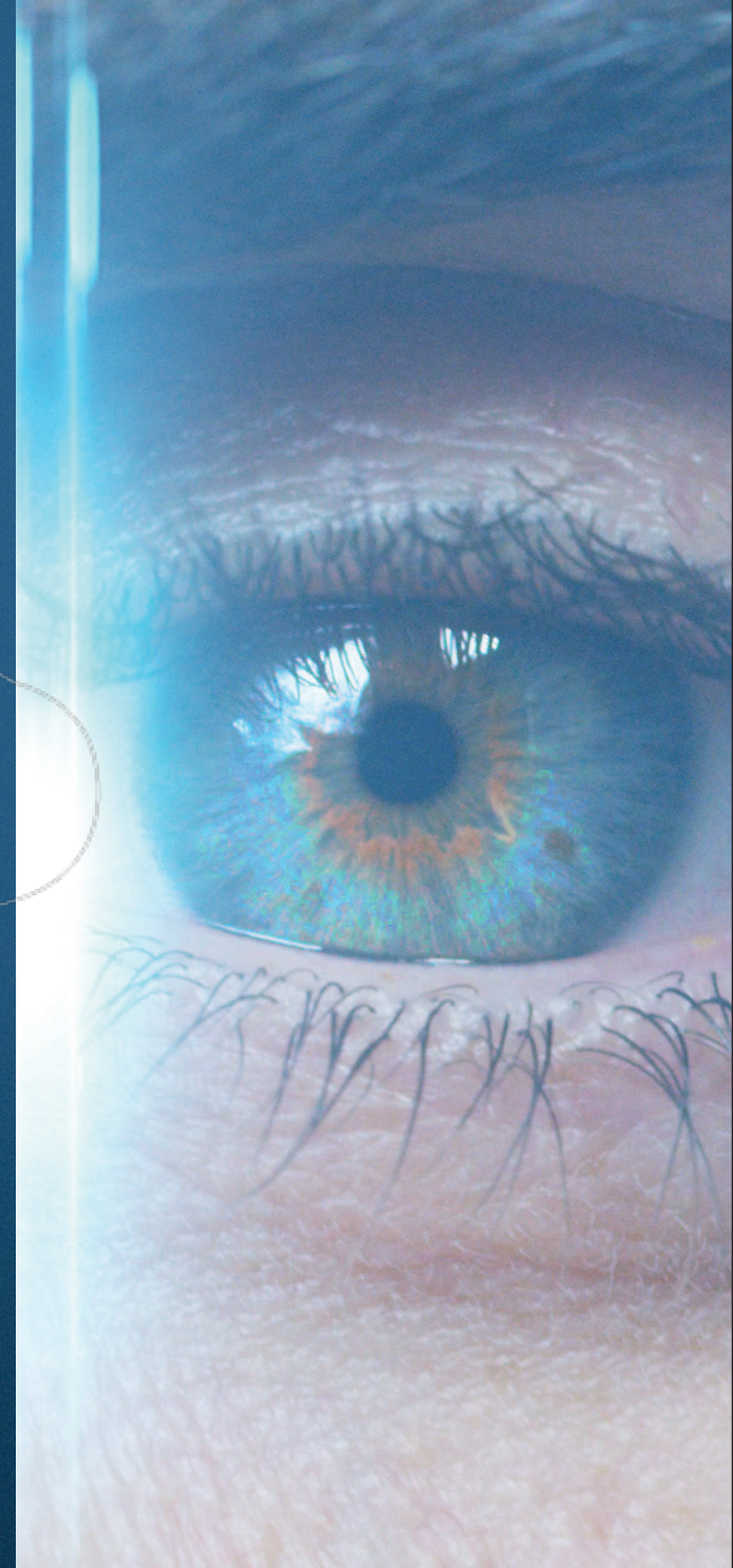
## DIGITAL CONTROL

TOUCH CONTROL CUSTOMISABLE BY THE USER

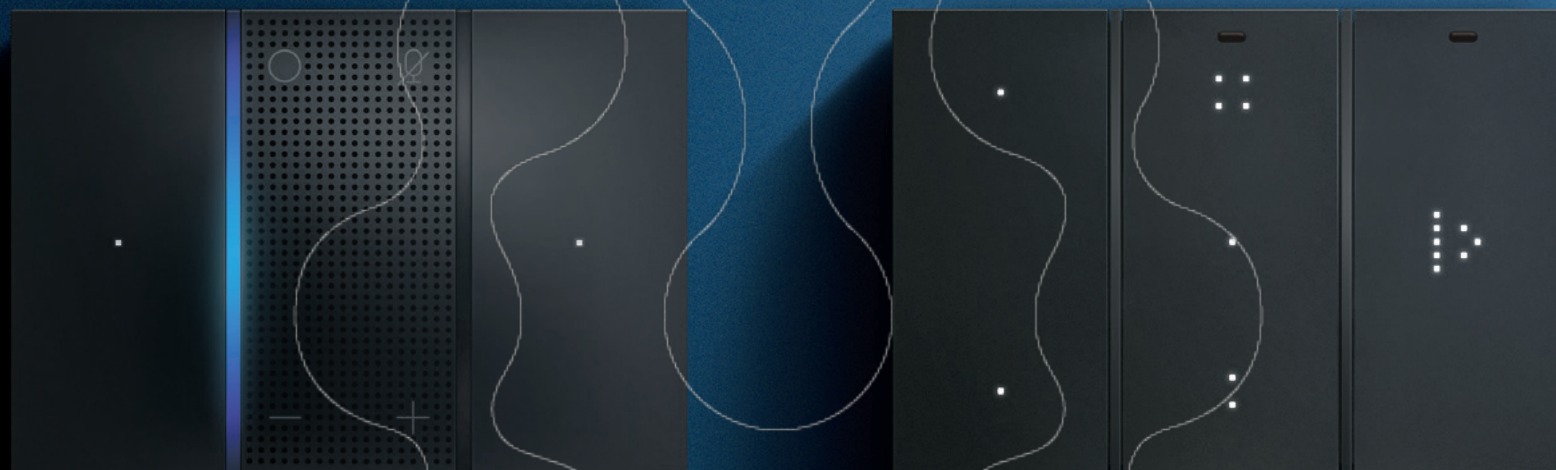
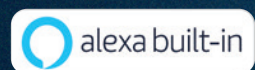


# THE NEW LOOK OF HOME AUTOMATION

LIVING   
**now**





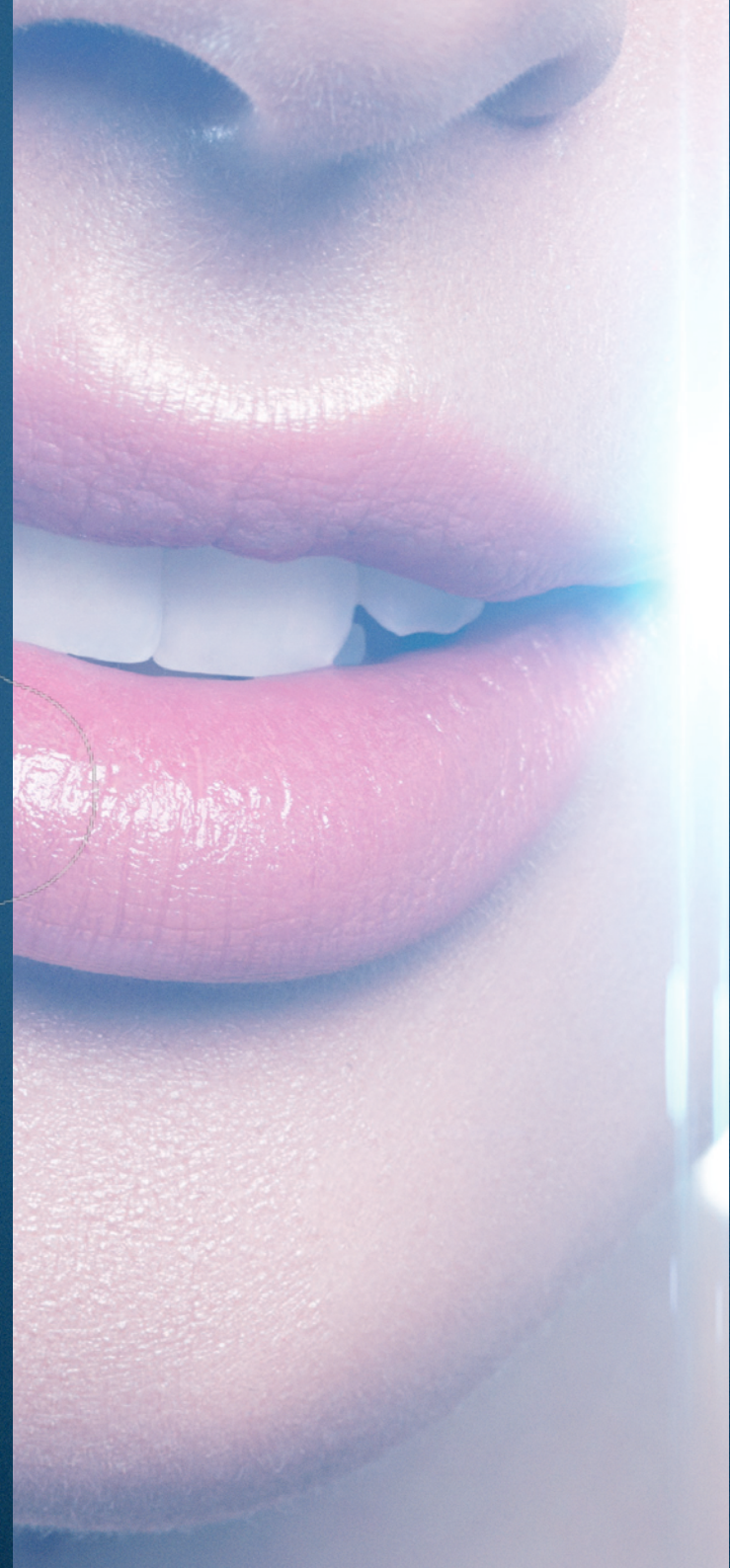


DIGITAL CONTROLS WITH A NEW AND EXCLUSIVE CONCEPT.  
A MIX OF INCOMPARABLE INNOVATION AND SIMPLICITY,  
READY TO BE DISCOVERED, HEARD AND TOUCHED.



# THE VOICE OF HOME AUTOMATION

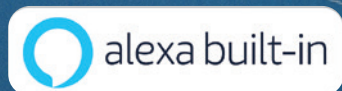
LIVING   
**now**





## VOICE CONTROL

ALEXA DIRECTLY ON THE WALL  
INTEGRATED WITH  
HOME CONTROLS.  
INNOVATIVE PRODUCT AWARDED  
AT THE CES OF LAS VEGAS.



ALEXA IS BY YOUR SIDE  
JUST HAVING THIS DEVICE  
IN EACH ROOM



VOICE ASSISTANTS

LIGHT CONTROL





## YOU ASK, ALEXA ANSWERS

Control home automation through your voice: lights, rolling shutters, burglar alarm, favourite music and temperature, or ask for any information.



*Alexa, what will  
the weather be like  
tomorrow?*

*"Alexa, welcome  
me home!"*



**Note:** setting up a routine is required to perform this action". With the "Welcome me home" routine, it is possible to activate lights, rolling shutters and music and set the ideal temperature.



*"Alexa, at what point  
is the cake timer?"*

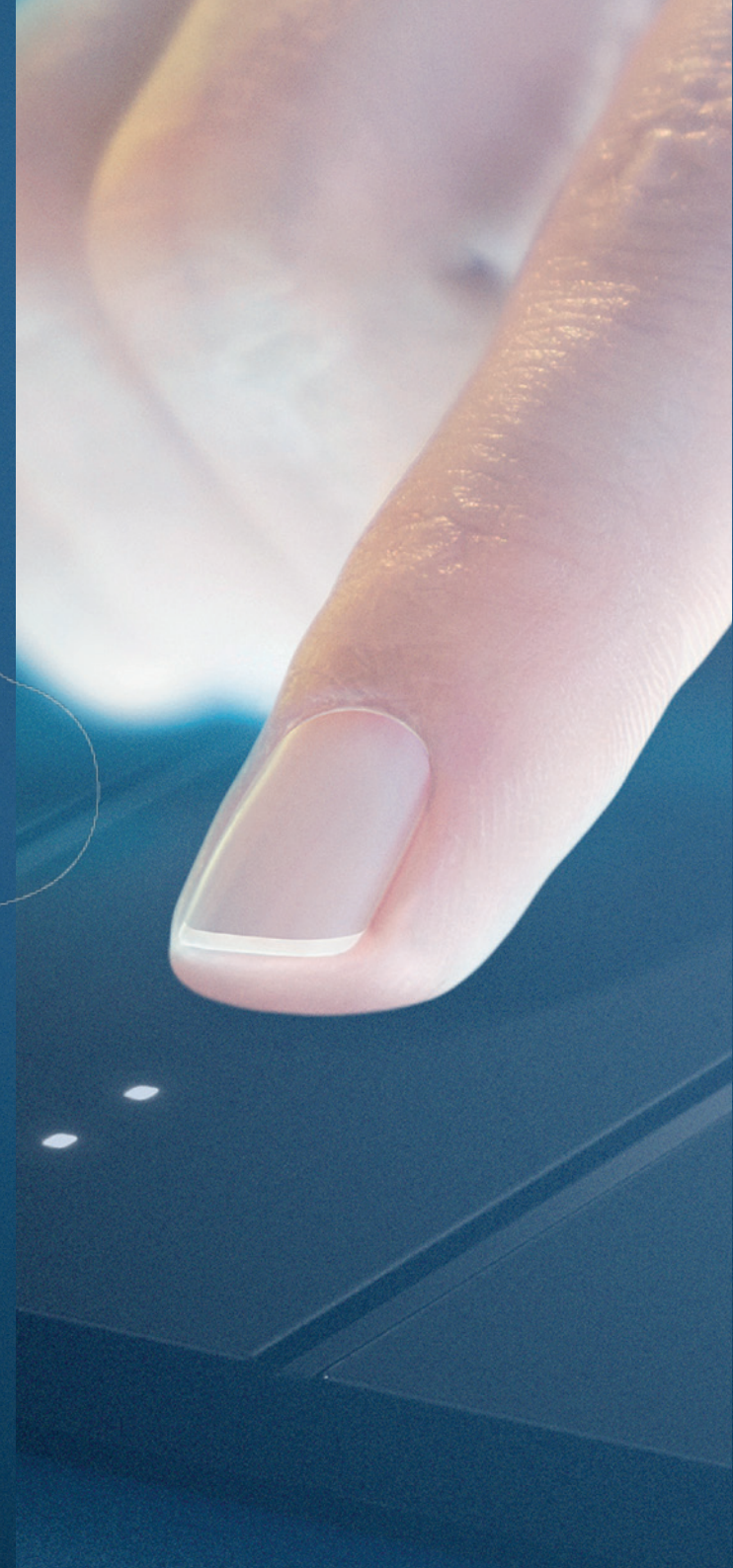
**MyHOME\_Up** system can be managed with the voice also with the Amazon Alexa and Google Home voice assistants.





# A NEW WAY TO TOUCH HOME AUTOMATION

LIVING   
**now**





# DIGITAL CONTROLS. A MULTISENSORIAL EXPERIENCE.

NEW TOUCH CONTROL  
WITHOUT COVER PLATE

CUSTOMISED ICONS AND LEDS  
USING AN APP

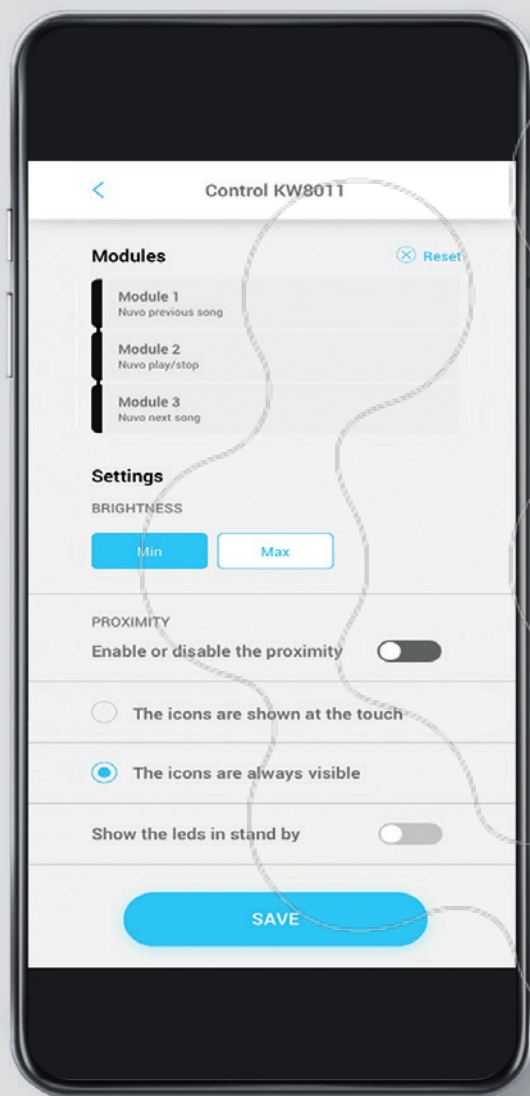
EXPANDABLE TO NEW  
FUNCTIONS



LIGHT CONTROL

FULL CONTROL





END USER APP

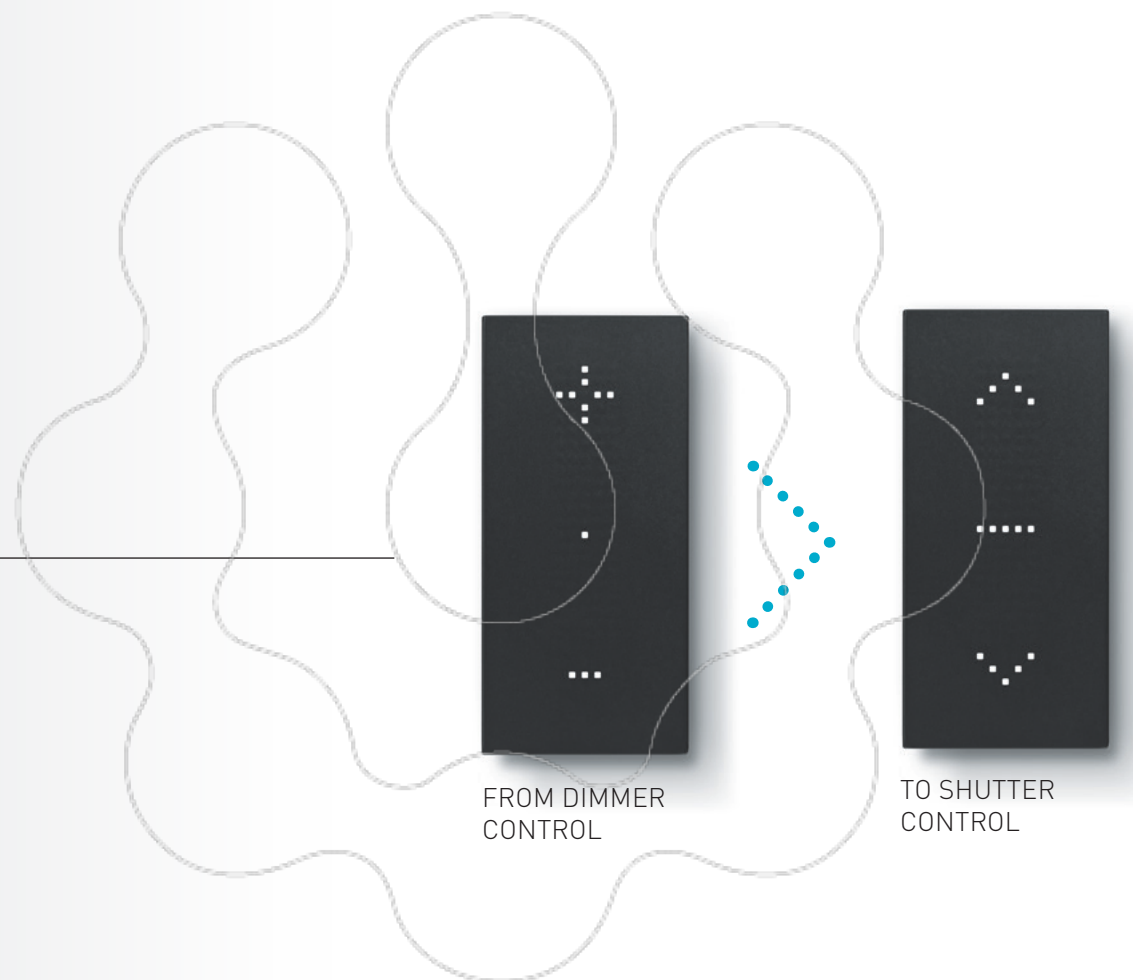
# CREATE CUSTOMISABLE FUNCTIONS

The function associated to the control device and the corresponding icon can be changed at any moment, also by the end user, using simply an app.



## FUNCTION MODIFICATION

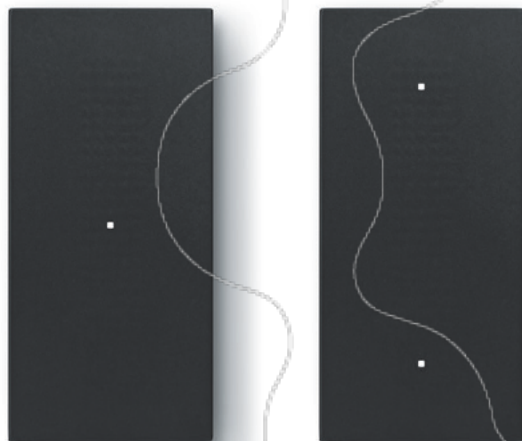
---





## LIGHT CONTROL

TO MANAGE THE LIGHTING  
(1 OR 2 LIGHTS, GROUP AND GENERAL)



## CREATE

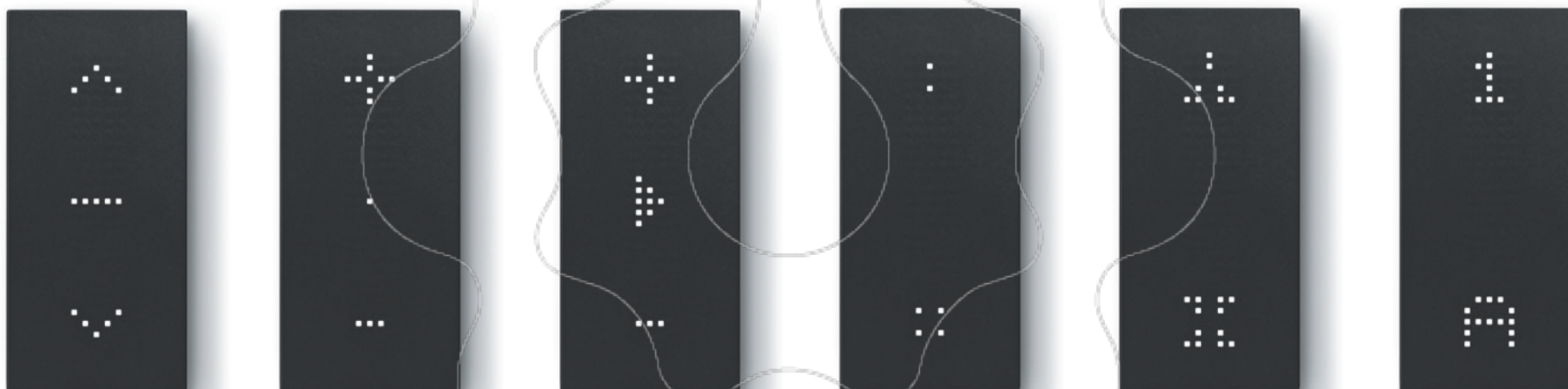
CHOOSE BETWEEN  
FULL AND LIGHT  
CONTROLS

Digital controls for every need.  
Two versions, endless customisation  
to be adapted to life style.

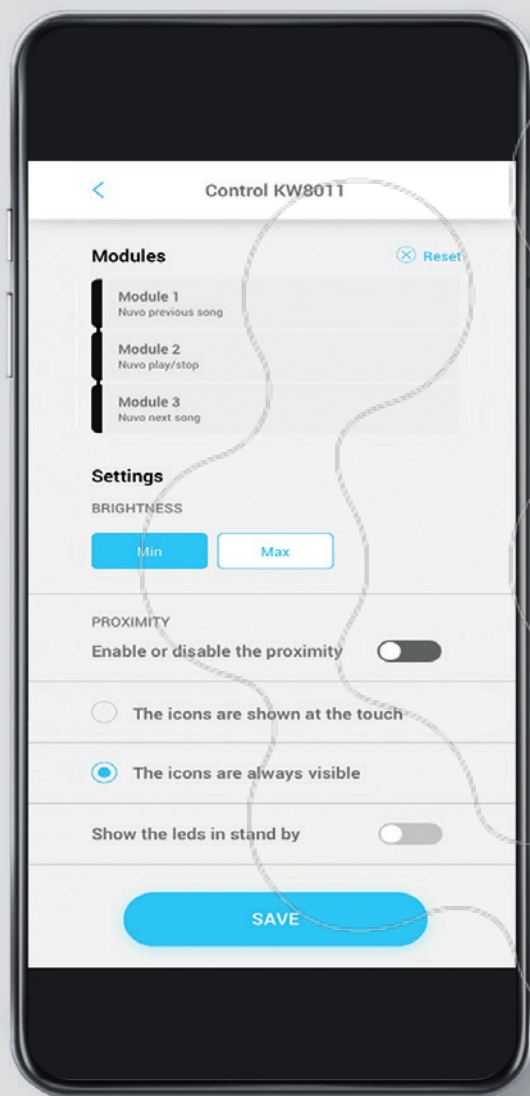


# FULL CONTROL

FROM 1 TO 3 LIGHT, DIMMER, ROLLING SHUTTER, NUVO AUDIO, LOAD CONTROL, SCENARIO, COLOURED LIGHT FUNCTIONS.







END USER APP

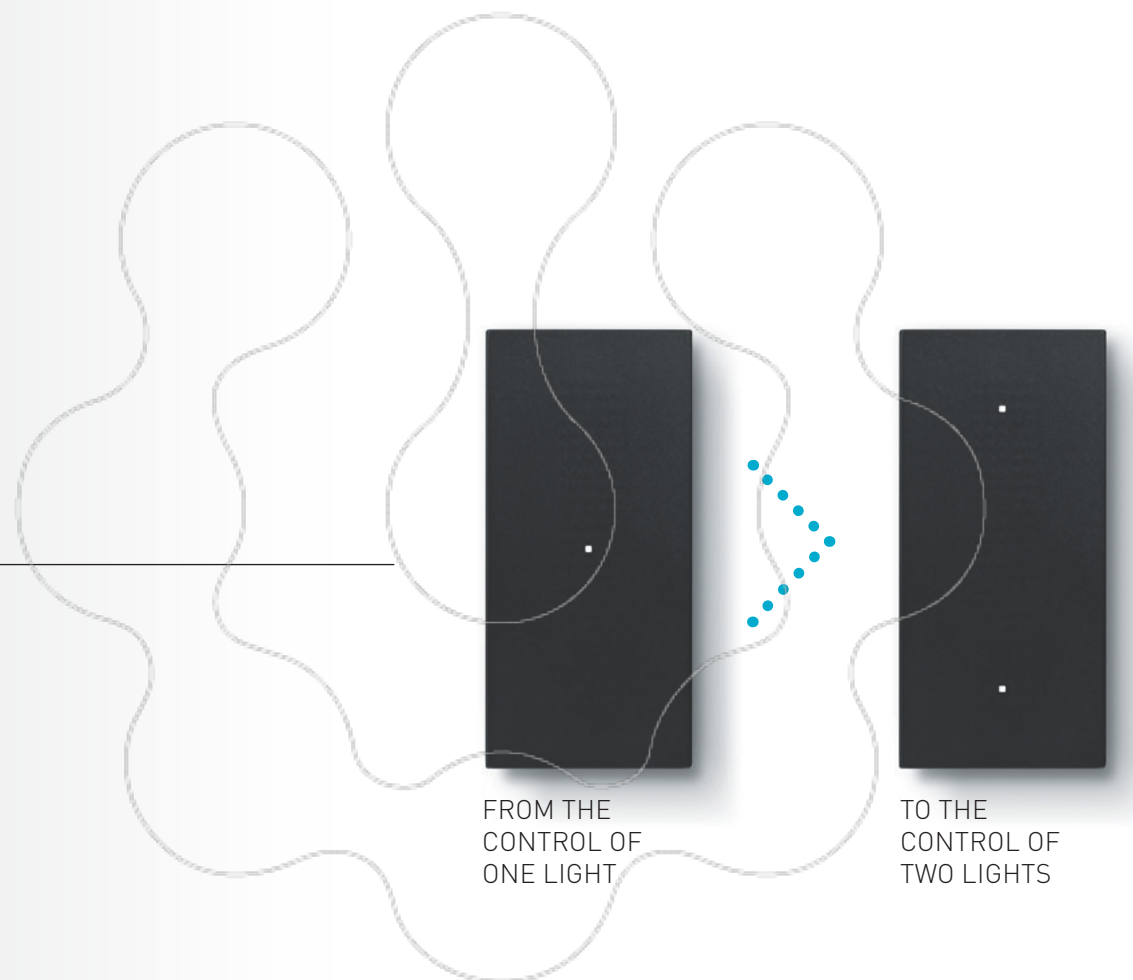
# EXTEND THE FUNCTIONS

Expand the system by adding new functions associated to the control device, using simply an app.



## FUNCTION EXTENSION

---





LIVING  
**now**



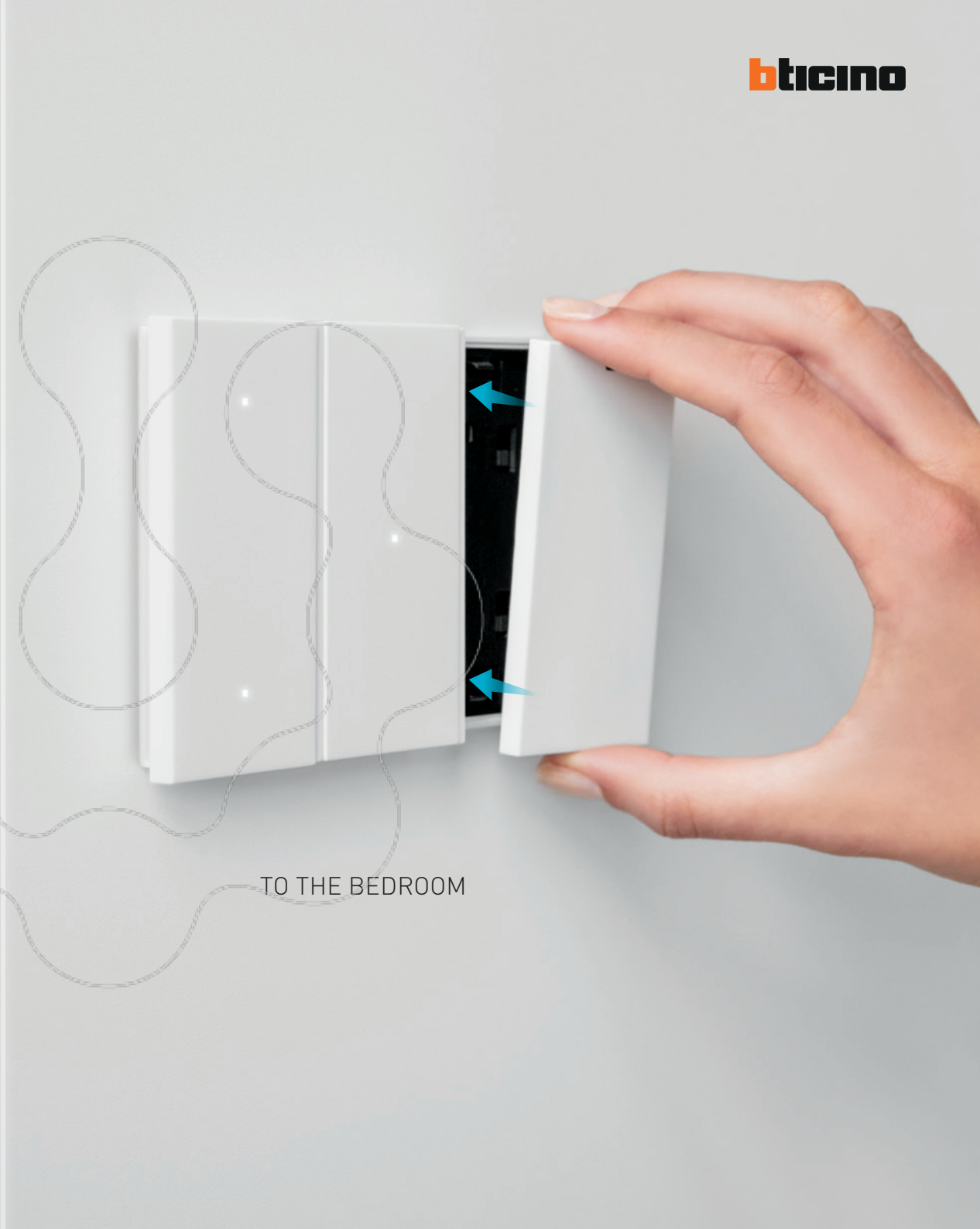
FROM THE  
LIVING ROOM



# MOVE THE POSITION

With a simple operation,  
it is possible to change the  
position of a control device,  
maintaining its function.  
Without wiring.





TO THE BEDROOM



# LIVING NOW AND **MyHOME\_Up**. HOME AUTOMATION



USING THE VOICE COMMANDS, IT IS NOW POSSIBLE  
TO MANAGE WITH YOUR VOICE  
LIGHT, ROLLING SHUTTER, BURGLAR ALARM,  
TEMPERATURE AND MUSIC SCENARIOS.







VOICE CONTROL



TEMPERATURE CONTROL



DIGITAL CONTROL



CONTROLLED SOCKET



TOUCH SCREEN HOMETOUCH



MULTI-ROOM AUDIO SOUND SYSTEM

CONTROL ALL **MyHOME\_Up**  
AND THIRD PARTY FUNCTIONS  
AS YOU WISH.



VOICE  
COMMAND

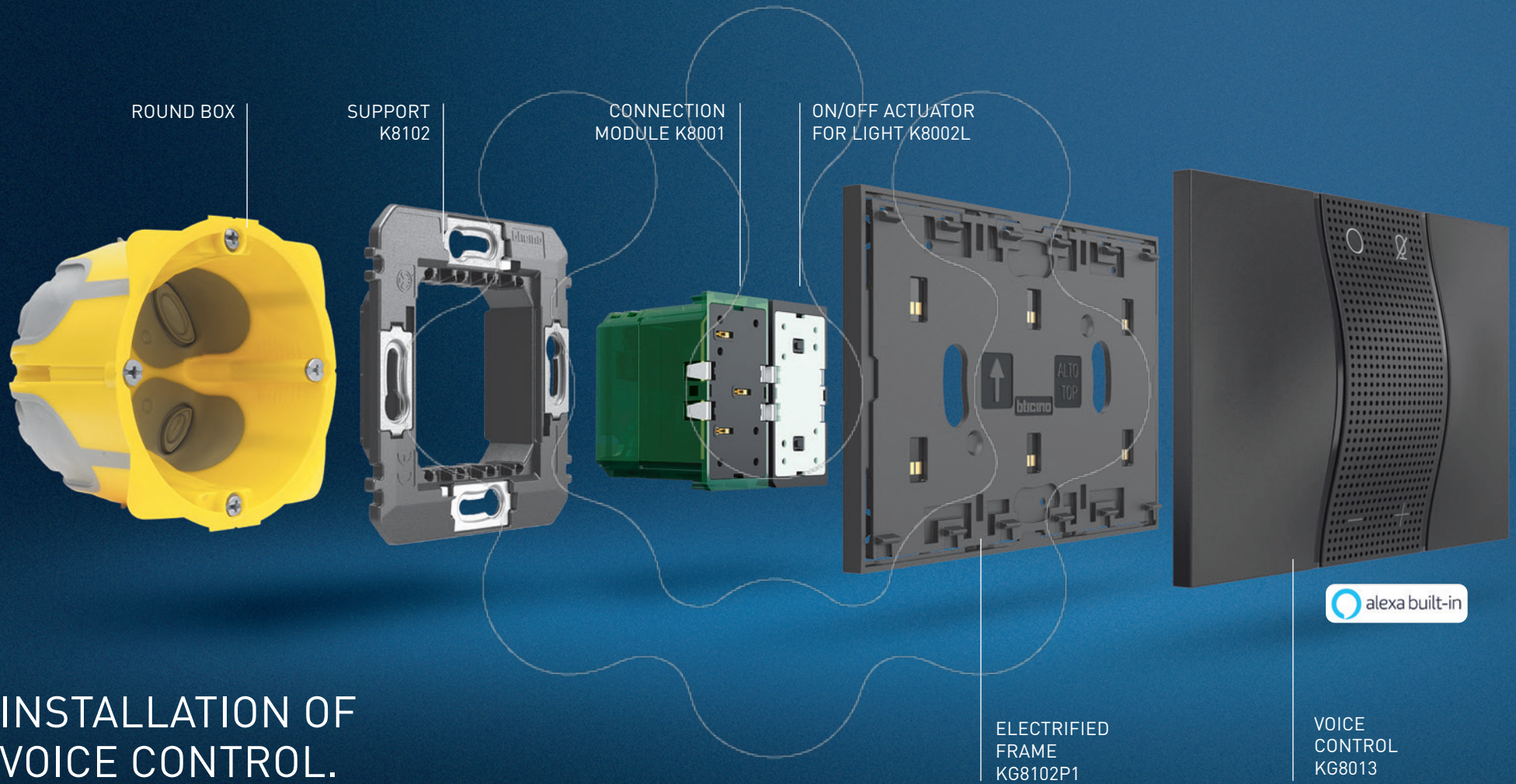


CONTROL WITH  
SMARTPHONE



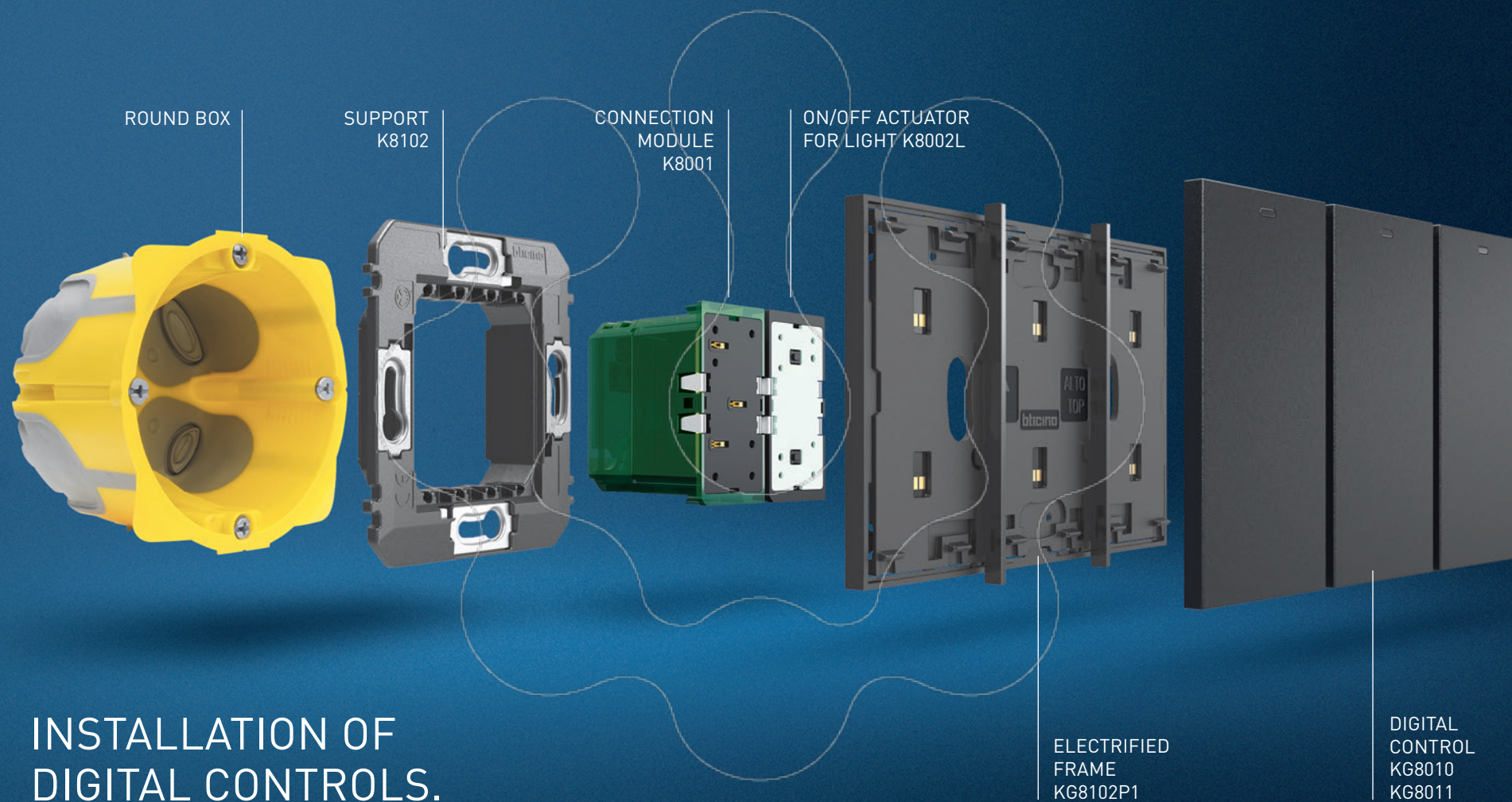
TOUCH  
CONTROL





INSTALLATION OF  
VOICE CONTROL.





INSTALLATION OF  
DIGITAL CONTROLS.



# CATALOGUE



KG8013

K8003

KM8010

KW8011

K8002L  
K8002s

K8001



Item

## Voice control

- ☐ KW8013
- ☒ KG8013
- ☐ KM8013



Amazon Alexa digital control device with voice assistant, including two touch controls for lighting management. 27 Vd.c. power supply from BUS through connection module item K8001 or additional power supply unit, item K8003 - 3 modules

☐ K8003

## Power supply



Connection module with additional power supply dedicated to Voice control Alexa built-in item KW/KG/KM8013 - 2 modules

## Light control

- ☐ KW8010
- ☒ KG8010
- ☐ KM8010



Touch control for the management of ON/OFF light functions. One single control can manage from 1 to 2 functions between single lights, light groups or general lights. - 1 module

## Full control

- ☐ KW8011
- ☒ KG8011
- ☐ KM8011



Touch control for the management from 1 to 3 functions between: lights on/off, load control, dimmer, shutters up/down with or without preset, NUVO Player and scenarios. It can also be used as group or general control. It has on-board proximity sensor that allows the display of function icons/symbols when approaching the control - 1 module

Item

## ON/OFF actuators for lights and for shutters

☐ K8002L



Flush-mounted actuator with 2 independent and neutral relays for "zero crossing" function- single or double 230 V~ loads - 1 module

☐ K8002S



Flush-mounted shutter actuator with 2 independent relays. It allows the management of a specific shutter position. Through the control KW/KG/KM8011, together with the UP/DOWN function monostable and bistable, the actuator also places the shutter in a stored (PRESET) position - 1 module

☐ K8001

## Connection modules



Device for the power supply of controls and actuators through electrified frame item KW/KG/KM8102P1.





K8102



KG8102P1

#### Item

- ☐ KW8102P1
- ☒ KG8102P1
- ☐ KM8102P1

#### Electrified frame



Electrified frame with intermediate control separators (removable).  
For the installation of up to 3 digital controls or covers, item KW/KG/KM8100  
in 2-module box with support K8102

- ☐ KW8100
- ☒ KG8100
- ☐ KM8100

#### Blanking module



Cover for blanking module art. K4950  
- 1 module

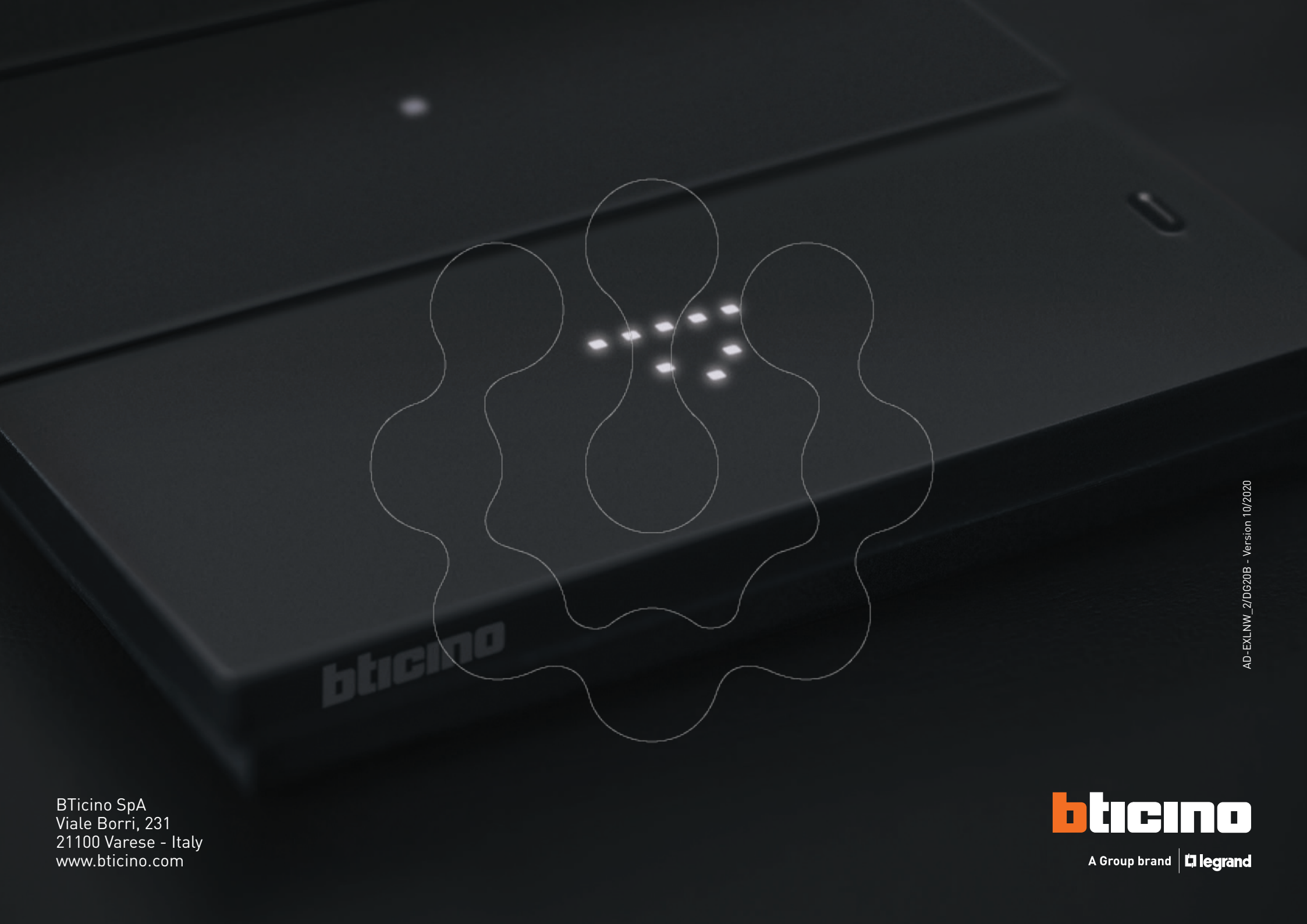
- ☐ K8102

#### 2-module



Support for the installation of the electrified frame  
item KW/KG/KM8102P1 in 2 module box.





BTicino SpA  
Viale Borri, 231  
21100 Varese - Italy  
[www.bticino.com](http://www.bticino.com)

**bticino**

A Group brand | **legrand**